



### COMING EVENTS

[Click here to view the full calendar online](#)

16 & 17 September	Class 12 Independent Project Presentations 6pm
Thursday 18 September	School Spring Festival
Friday 19 September	Class 5 Lunch Bar
Friday 19 September	High School Sports Day
Friday 19 September	Last day of Term 3
Saturday 27 September	E-Waste Drop Off Day
Monday 6 October	First day of Term 4
7-10 October	Class 5 Camp
Wednesday 15 October	Helping Hands Parent Group Meeting, 6.30pm
16-17 October	Class 3 Camp

Kia ora whānau,

Firstly, a heartfelt thank you to all the whānau who joined us for our High School Information Evening earlier this week. It was a wonderful occasion with over 100 parents and students in attendance. Together, we were able to hear from recently graduated students and past alumni, who shared how their time in our high school prepared them for life beyond school. It was also a valuable opportunity to connect with our dedicated high school colleagues.



I also hope you had a chance to view our stunning Art Exhibition, set up in the auditorium foyer and the eurythmy room. The creative works on display showcased the incredible talent and effort of our students across the school, it truly was breathtaking and a joy to experience.

This afternoon's Cultural Performance was another highlight for our community. The event was filled with energy, colour, and pride as we celebrated the richness and cultural diversity within our school and wider community. It was a privilege to witness and enjoy the many wonderful performances.

Have a great weekend.

GO THE ALL BLACKS

UP THE WAHS

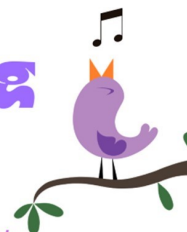
Ngā mihi nui,

Desmond Pamerika

Tumuaki



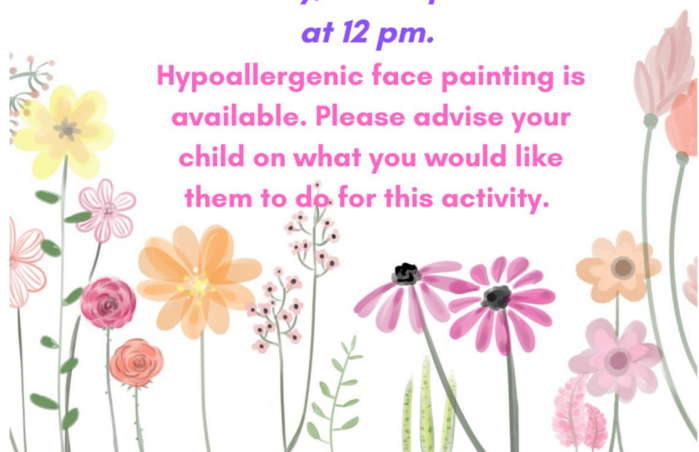
## MPS Spring Festival



*Join us for a vibrant celebration of the season as we welcome Spring together!*

*Pack a picnic and join us on Thursday, 18<sup>th</sup> September at 12 pm.*

**Hypoallergenic face painting is available. Please advise your child on what you would like them to do for this activity.**



## CLASS 12 INDEPENDENT PROJECTS

Please join Class 12 for their **Independent Project Presentations** in the **Auditorium** on **Tuesday 16<sup>th</sup>** and **Wednesday 17<sup>th</sup> September**, starting at **6PM**.

It will be a wonderful opportunity to celebrate a year long journey into a diverse range of projects that our students have undertaken. Come and be inspired by the dedication, creativity, and passion our students have poured into their work in their final year of School.

Projects include, for example:

- Running an ultra marathon
- Writing an original play
- Building an electric guitar
- Constructing a sauna
- Growing a tea garden

We look forward to sharing this special event with you!

## FAIR UPDATE - 57 DAYS TO GO

- The pre-loved clothing bin is now out in front of the foyer. Please make sure clothing is washed before placing in the clothing bin.
- Anyone with a business or contacts that is willing to donate prizes for our raffle please email [reneecoulter@gmail.com](mailto:reneecoulter@gmail.com)
- Hay bales, bamboo sticks & oasis floral foam - if you know of anyone who could help us out with these, please contact Erin [fairadmin@michaelpark.school.nz](mailto:fairadmin@michaelpark.school.nz)
- Anyone that knows how to use a sewing machine and is willing to come one Friday morning to Craft group to help sew more bunting for the fair, please email [melibrooks@gmail.com](mailto:melibrooks@gmail.com). We're also looking for fabric donations. We'd like to make it very welcoming and festive at the soccer field/kindy entrance. Please drop any donations to the handwork room.

All queries to Erin Wilson [fairadmin@michaelpark.school.nz](mailto:fairadmin@michaelpark.school.nz)

### CAKE STALL

Every year, each family makes 2 cakes and 1 additional item (meringues, cookies, fudge, homegrown produce) for the cake stall at the fair.

We will continue to use the cardboard boxes to display the cakes. Packaging supplies will go out to families between 20th and 24th October.

**BEST IN SHOW** - Prizes are back, so get inspired and create your dream cake to win - best in show, most creative, etc.  
*\*there is also a prize for cakes made by adults!*



### TIPS -

- Get baking in the holidays - choose items that can be frozen.
- Specialty cakes always sell well (Christmas cakes, gluten free, etc).
- Make your cakes look pretty! If you are looking for inspiration, there are many wonderful sites on the internet.

Happy Baking!

## Whakataukī o te Wā

'Iti noa, he pito mata', referring to a small uncooked portion of kūmara replanted to produce many more.

A good reminder that this is a great time to get those kūmara tipu sprouting.



## HOST FAMILY NEEDED



Michael Park School is looking for School Family to host a High School Student in Term 4 2025. The student is coming from a Waldorf School overseas.

Please contact Brenda Davidson if you are interested in hosting our lovely student. Please email Brenda on [brendad@michaelpark.school.nz](mailto:brendad@michaelpark.school.nz) with your queries.

## Celebrate Spring Festival with the Dahl Wala!

*Bhel puri!* Craving yummy, delicious & exotic flavours of Indian street food?

Tangy, fragrant and crunchy Bhel Puri is popular Indian street food at its best!



Crispy puffed rice, potatoes and chickpeas are tossed with a range of toppings to choose from, including sweet, sour & spicy chutneys and aromatic herbs.



Baking and savoury!

morning tea and lunch!

# Class 5 Lunch bar

Friday 19th September



# Special Character Articles

A place to share information to deepen our understanding of our Special Character as a Steiner school

This article comes from the Waldorf School of the Peninsula - a Steiner school established in 1984 to provide for children in the fast-paced, technology-oriented culture of Silicon Valley.

## “Why Waldorf Prepares Your Child for the Age of AI”

*In a world shaped by artificial intelligence, AI-proof education that develops what makes us truly human matters more than ever.*

### **What AI Leaders Are Telling Us**

*The world's top AI experts are delivering a surprising message: the future doesn't belong to children who can code the earliest or use AI tools the fastest. Instead, it belongs to those who master uniquely human capacities.*

*Sam Altman, CEO of OpenAI, warns that AI “may dominate raw cognition, but it lacks our emotional depth, moral reasoning, and ability to connect.” Dr. Fei-Fei Li, Co-Director of Stanford's Human-Centered AI Institute, urges educators: “We should raise our new generations to be full humans, not machines.”*

*While other schools rush to add AI tutors and coding classes, they're missing the point entirely. The skills that will matter most in 2030 and beyond aren't technical—they're deeply human. Moreover, they can't be taught through screens. This is why forward-thinking parents are seeking AI-proof education that develops uniquely human capacities.*

### **The Reality: Most “Future Skills” Programs Are Already Obsolete**

*As Sir Ken Robinson, internationally recognized education and creativity expert, warned: “Creativity now is as important in education as literacy, and we should treat it with the same status.” Yet traditional schools continue to prioritize test prep over the human capacities that AI cannot replicate.*

*At Waldorf School of Silicon Valley, we've been cultivating these essential human skills for over a century. Furthermore, leading AI researchers are now validating our approach with hard science.*

### **AI-Proof Education: The Human Capacities That Define the Future**

*Research from MIT, Stanford, and leading AI labs confirms: the children who thrive in an AI world will be those who develop these uniquely human strengths.*

**Read the full article here:** <https://waldorfpeninsula.org/why-waldorf-prepares-your-child-with-ai-proof-education/>

## Philippine eagle

Hope, courage, strength, and  
peace,  
time to leave your very own  
niece.

Come now, come along,  
chanting to this poem song.  
Up high in the deep, blue sky,  
please, just never have it fried.  
Over here, in Southeast Asia,  
beware of talons like razors.  
But before we do say ‘bye’,  
it can't take you to the sky,  
please, don't take it to the lake.

By Kaeden

## CLASS 4 HUMAN AND ANIMAL MAIN LESSON

### Penguin

Let's go now and have a peck  
at why I chose the penguin.

I have always loved the penguin because...  
The penguin is a smart dude, with flippers  
big and not at all rude.  
They love their fish, and they're super cool!  
I wonder how they will swim if put in a  
pool.

The end.

By Zoot





# Ellerslie Fairy Festival and Pirate Party this weekend!

Come and see the Helping Hands of  
Michael Park School stall next to Hells  
Pizza, Ellerslie!

Sunday 14<sup>th</sup> September 9:30am - 12:30pm

A big thank you to all the crafters who  
have contributed, and to the volunteers  
who have helped make this possible.

## BEHIND THEIR SCREENS

School  
Fundraiser



### A Presentation for Parents

by Dr Samantha Marsh

Thursday 16 October, 7-8.30pm

This presentation explores:

- How social media and smartphone tech are designed to capture attention
- Why these designs often clash with how children and teens develop
- The impact of digital use on young people's wellbeing
- Practical strategies to help families navigate the digital world with confidence.

For parents of primary, intermediate, and secondary students.

Thursday 16 October, 7-8.30pm

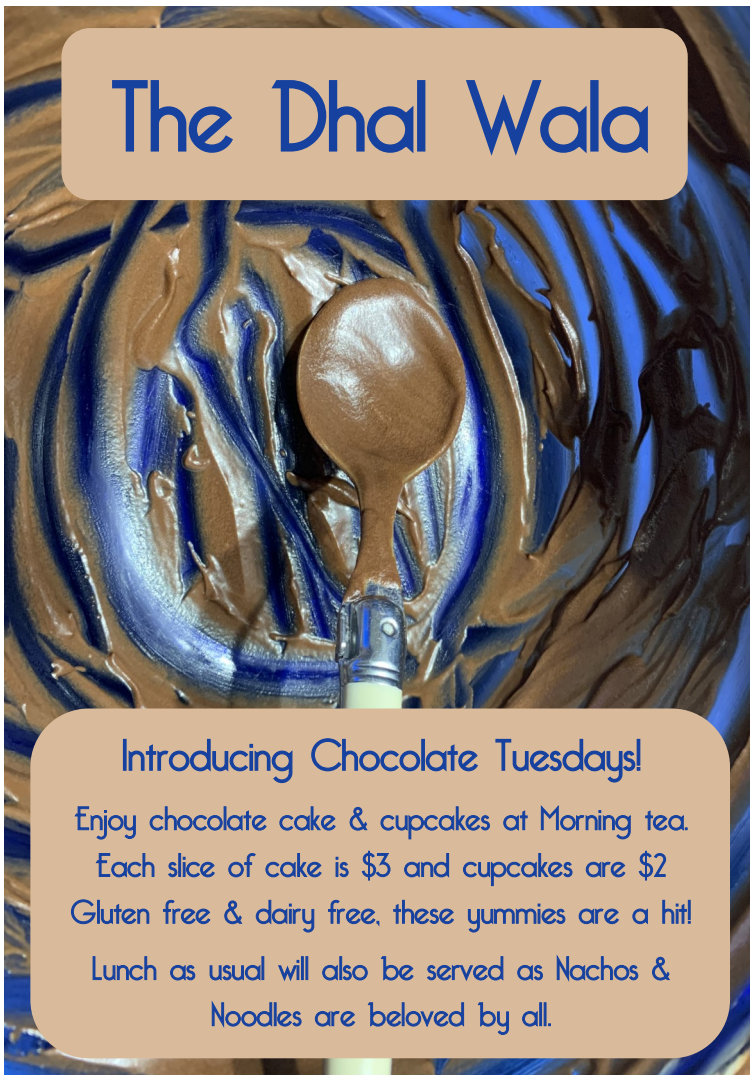
Michael Park School Auditorium, 55 Amy St, Ellerslie

\$10 per person

A 'Helping Hands' school fundraiser with all funds going towards the Michael  
Park School playground. Tickets available:  
<https://www.eventfinda.co.nz/2025/behind-their-screens2/auckland/ellerslie>



## The Dhal Wala



### Introducing Chocolate Tuesdays!

Enjoy chocolate cake & cupcakes at Morning tea.

Each slice of cake is \$3 and cupcakes are \$2

Gluten free & dairy free, these yummys are a hit!

Lunch as usual will also be served as Nachos &

Noodles are beloved by all.

SAVE THE DATES 10 -12th JANUARY 2026

## Social Eurythmy Course

Eurythmy Aotearoa is bringing the highly skilled  
and experienced, Goetheanum accredited  
Social Eurythmy trainer Teresa Mazzei to New Zealand  
to run an introductory, three day Social Eurythmy course.

**WHEN** - January 10<sup>th</sup> - 12<sup>th</sup> 2026

**WHERE** - Michael Park Steiner School, Auckland.

**COST** - \$250

**WHO CAN ATTEND** - This introductory course is designed for  
qualified eurythmist's and fourth year eurythmy students,  
and individuals with a strong interest in exploring the  
application of eurythmy in workplace settings.

To register your interest, write to Sue Simpson  
[eurythmyaotearoa@gmail.com](mailto:eurythmyaotearoa@gmail.com)



# ELECTRONIC WASTE DROP OFF DAY



**27th September 2025  
SATURDAY 9AM - 3PM**

Michael Park School  
55 Amy Street, Ellerslie

Drop off your unwanted electronic products &  
unwanted tech at this drive-thru event!  
Staff will unload everything for your convenience.

IMPORTANT: Dropping off e-waste is allowed only on the event day. You cannot drop off e-waste prior to, or after, the event day at this site.

We are proud to be accepting  
donations for Variety - The  
Children's Charity.



## FREE OF CHARGE FOR DISPOSAL:

Computer & Laptops, Tablets & Small Devices, Mobile Phones, Wiring & Cabling, Power boards & Multiplugs, Servers & Switches, Routers & Modems, HDDs & USB Drives, UPS Batteries, Lead Acid & Car Batteries.

## CHARGED ITEMS:

(Please check our website for more information)

- \$1-2 each Fluorescent Compact Light Bulbs and Tube Bulbs
- \$3 each Toner Cartridges, Keyboards, IP & Landline Phones
- \$5 each Small Home Appliances e.g. Microwaves, Vacuums, Kettles  
AV Equipment & Stereos, Digital Cameras, Oil Heaters
- \$5.00 kg Household Batteries, Mixed Batteries, Lithium Batteries
- \$10.00 each Small Inkjet & Laser Printers, Scanners & Fax Machines
- \$20.00 each LCD & Plasma TVs, Ovens, Washing Machine & Dryers,  
Dishwashers and Large Whiteware
- \$30.00 each Medium Photocopiers & Printers
- \$40.00 each Fridges & Freezers, Heatpumps
- \$60.00 each Large Photocopiers

Please note the charges above are for sharing the recycling costs.  
Eftpos and cash accepted on-site.

## ITEMS NOT ACCEPTED:

Vapes, CDs & DVDs, Floppy Discs, LED & Household Lightbulbs, LPG Gas Bottles, Other hazardous waste e.g. paint, garden waste or general chemicals, furniture e.g. TV cabinets, medical devices or glass.

VISIT OUR WEBSITE TO LEARN MORE!

[www.echotech.co.nz](http://www.echotech.co.nz)

0800 EWASTE

You can book an e-waste disposal pick-up at a time that is convenient to you. Help us keep New Zealand clean!

## Craft School Holiday Program

with Michelle Mullany

Wednesday 24th September  
Wednesday 1st, Thursday 2nd October  
9am-3pm

MPS Handwork Room

Class 1-5 Tamariki (Ages 6-11)  
Crafts galore and cooking/baking!

\$90 for 1 day

\$80 per day for 2 or 3 days

Limited spaces available.  
Book now to secure your space.

[michellemullany@gmail.com](mailto:michellemullany@gmail.com)

022 127 6551



## Outdoor Classroom Holiday Workshop with Luis Bernal

A day of traditional crafts, bushcraft and cooking.  
Michael Park school tent. 9:00 - 3:00pm

September, Thursday 25 and Friday 26.

25 & 26  
FULL

**NEW DATES! Monday 29 and Tuesday 30!!**

One day \$85, two days \$150.  
Expressions of interest welcome at  
[luisbernal@gmail.com](mailto:luisbernal@gmail.com).