



COMING EVENTS

[Click here to view the full calendar online](#)

Tuesday 26 August & Wednesday 27 August	Class 8 Play 'A Midsummer Night's Dream' 6pm
25-27 August	High School Assessments
Friday 29 August	Mid Term Break
29-30 August	NIWA Science & Technology Fair - MPS Gymnasium
Friday 29 Aug	Public viewing 6pm-8pm
Saturday 30 August	Public viewing 10am-4pm

Kia ora whānau,

Today we said farewell to our wonderful groundsman, Steve, on his last day with us. For the past 10 years Steve has been a much-loved presence around our school. Many of our lower school students will fondly remember his friendly smile as he drove his green ride-on mower, helping to keep our grounds looking so beautiful. We thank Steve for his dedicated service and wish him all the very best for a happy and well-deserved retirement.



Yesterday, our Class 7–12 students and staff gathered with special guests to commemorate our beloved colleague and gardener, Lyndle McIlveen, who passed away a year ago this week. Lyndle contributed so much to the beauty and spirit of our school, from her landscaping and garden design to the many handcrafted props for our fairs — including the well-known clucky hen that is still enjoyed today. In her memory, a beautiful wooden bench was unveiled. It now rests in front of *Treeland*, the special area between the library and high school that Lyndle herself designed and planted out, serving as a lasting reminder of her care and creativity.

I would like to wish our Class 10, 11 and 12 students all the very best as they begin their derived grade assessments next week. Our Class 8 students are also in the final stages of rehearsing for their upcoming play performances next week. I am looking forward to seeing their hard work come to life on stage. A reminder that we have our mid-term break next Friday.

Have a wonderful weekend.

GO THE ALL BLACKS
UP THE WAHS

Ngā mihi nui,
Desmond Pamerika
Tumuaki



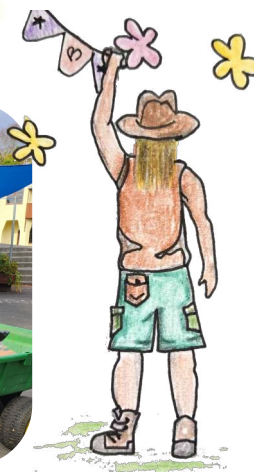
Class 8 are proud to present

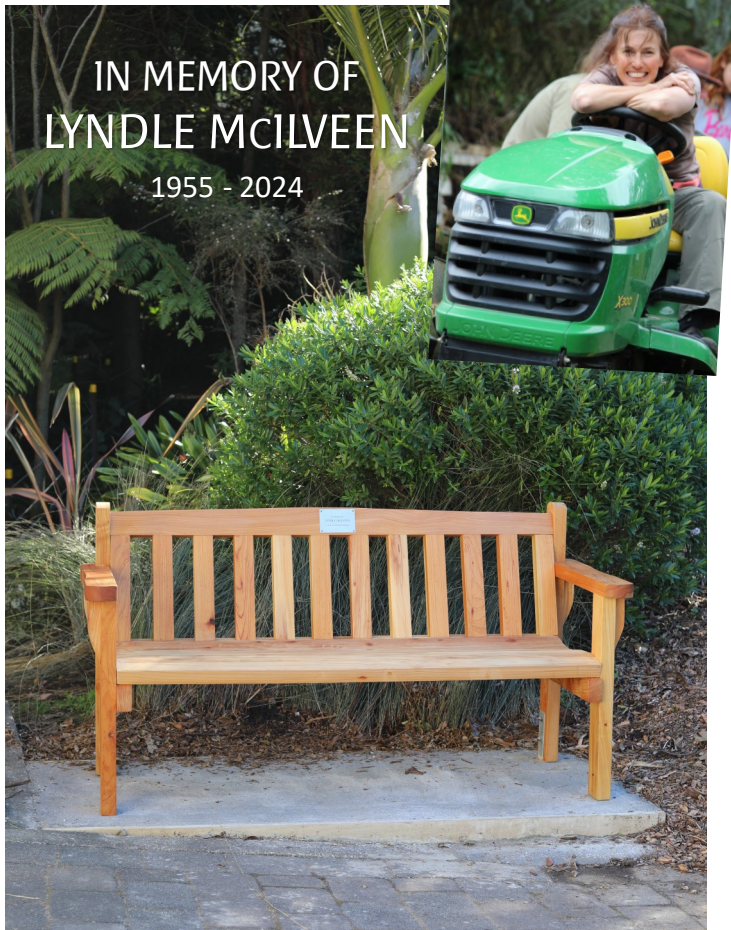
A Midsummer Night's Dream

by William Shakespeare - a whirlwind tale of love, mischief, and magic! In this fast-paced, 45-minute abridged version, suitable for all ages, you'll meet lovestruck mortals lost in the forest, feuding fairy royalty causing chaos, and a group of bumbling actors just trying to put on a play. Join us for a hilarious and enchanting journey where nothing is quite as it seems, and dreams and reality blur under the midsummer moon.

Tuesday 26th and Wednesday 27th August at 6:00pm
in the auditorium. Tickets are \$5.00 at the door.

Happy Retirement, Steve...
...we will miss you!





TE AO MĀORI

A space dedicated to promoting te reo me ōna tikanga Māori

Kia ora e te whānau whānui

This week is the last week of our Matariki Te Reo Māori Challenge for staff...but following close behind we have Mahuru Māori (more info here: www.mahurumaori.com) and then of course in the final week of term we have

Te Wiki o te Reo Māori!

Kia kaha te Reo Māori!

In celebration of these upcoming celebrations, I am preparing some new classroom resources which will be ready in time for Mahuru Māori.



Kete aronui

In our te reo Māori classes at the moment, we have been looking at all different kinds of weather. We've learnt waiata with sign, and kēmu related to weather, and some classes have done some book work too. Here are a few examples of the beautiful work from Te Puna Tuawhā (Class 4)

FAIR UPDATE - 78 DAYS to GO

- Pre loved clothing – it's time to start going through all your pre loved clothing. The clothing bin will be out in front of the auditorium on the 1st September. Please make sure clothing is washed before placing in the clothing bin.
- If you or someone you know may be able to contribute item/s for our raffles this year please contact me.
- Hay bales, bamboo sticks & oasis floral foam – if you know of anyone who could help us out with these please contact me.

All queries to Erin Wilson fairadmin@michaelpark.school.nz

FAIR MEETING (Class Coordinators)

On the 9th September (Tuesday) we will hold a Fair Coordinators meeting at 6.00pm in the staff room. If the class fair coordinator cannot attend then at least 1 representative from that class must attend.

Any queries please contact fairadmin@michaelpark.school.nz

Looking forward to seeing you then, the countdown to fair is now on!



PAT HANLY

CREATIVITY PROJECT AND AWARDS

PAT HANLY CREATIVITY AWARDS: STUDENT EXHIBITION

The 2025 Pat Hanly Creativity Awards opened at the Auckland Art Gallery Toi o Tāmaki on Friday night 15th August. This annual exhibition features a selection of the top submissions from over 30 Auckland Secondary Schools. The art is chosen by Gallery staff Kendra Stoner and Marleen Hartjes with the assistance of artist Ani O’Neil for its outstanding creativity, originality and skill. Displayed within the Gallery, these young artists’ works are placed in conversation with our other exhibitions and taonga (treasures), creating meaningful connections across generations of artists from Aotearoa. Our Luca Newton from Class 12 had his mixed media sculpture work titled *Apodyopsis* selected. Congratulations Luca.

The opening night was a wonderful celebration and the gallery stayed open until after 9:00 pm with a live DJ, a life drawing class, mask making and print making workshops, a fashion show, and classical strings music and dance performances. Thank you to the Visual Arts students in Class 12 who participated in this project from the start and to class mates, family and friends who came along on the 15th to support Luca and enjoy the event.

The exhibition runs until Sunday 31st August and can be viewed at the Te Aka Matua | The Creative Learning Centre on the Mezzanine Level of the gallery.

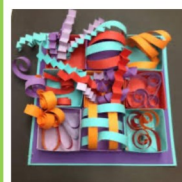


Calling all student and teacher artwork submissions for our *Whole School Art Exhibition*

LET'S CELEBRATE OUR CREATIVITY TOGETHER

We would love to have artwork from you before or by Friday 5th September.

*Finished drawings, paintings, collages, mixed media, designs, sculptures and 3D pieces, photographs, prints and craftwork are all welcome.
All shapes and sizes welcome within reason.*



MPS STUDENTS PRESENT



TERM 3 CONCERT

FRIDAY 5TH SEPTEMBER

6.30PM MPS AUDITORIUM

TICKETS:

Adult - \$10

Child - \$5

Family 4+ - \$25

Musicians and dancers -
click here for performer sign-up sheet

COMMUNITY NOTICEBOARD

Looking to support trades and services within our school community? [Click here for the Community Skill Share list.](#)

- **Cleaner available:** Our lovely MPS cleaning team, Richard and Sunita, are available for your cleaning requirements! Commercial cleaning, carpets, windows and general cleaning. Contact Richard on 021 578 271.
- **Social Media Manager.** I'm a seasoned marketer starting out as a Social Media Manager and looking to create some best-practice cases. I'd love to give back to our community. Do you run a (small) business and need help with Instagram? I've got one spot left for a free month of social media management. Let's connect - txt Catrina on 0279 49 1463.
- **Conscious Parenting.** Are you feeling stuck in stress, reactivity, or conflict as a parent? Do you want to feel more connected to your kids and less anxious in the day-to-day? Here's a fresh perspective: what if becoming the calm, confident parent you want to be isn't about "fixing" your child's behaviour - but reparenting yourself first. I offer 1:1 sessions based on Dr. Shefali's Conscious Coaching Method™ for parents who are open to seeing their relationship with their children as a mirror for personal growth. Special offer for MPS parents - 20% discount on 3 & 6 session packages. **Contact Donna:** <https://raisingparents.nz> raisingparentsnz@gmail.com

- **Rooms available** for single or families, 5min walk to MPS. What's on offer:
 - A large, light-filled room in a beautiful old home with soul
 - Access to a practitioner room + space for workshops or creative gatherings
 - A massive garden to grow, gather and ground
 - A swimming pool for summer swims under the stars
 - A relaxed, family-friendly atmosphere
 - Large kitchen for shared meals or solo feasts
 - Lots of off-street parking
 - 5-min walk to Ellerslie village + train station + easy motorway access.

Who you'd be living with:

A warm-hearted family of four, one other lovely housemate, and the occasional visit from grandkids.

Email - clairehomebirth@gmail.com for more details or to arrange a visit.

Contact the editor, Dana Marcroft at fridayflyer@michaelpark.school.nz
Guideline 150 characters maximum please. Deadline midday Thursday.



Simplicity Parenting WORKSHOP | 13 SEPT 2025

Create more space for connection, secure attachment,
love and laughter in your family

Based on the book 'Simplicity Parenting' by Kim John Payne, as a group we will learn practical ways to ease the daily tensions and parenting battles we all face in this fast paced modern world.

What we'll cover:

- Decluttering the environment.
- Bringing rhythm, ritual and predictability into each day.
- Allowing children plenty of downtime and play without overscheduling.
- Filtering out adult concerns and screentime that causes confusion, fear and anxiety.

The course is facilitated by Leah Corbett – a parent educator, primary school teacher and Michael park parent.

Saturday 13 September, 9am-2.30pm, Michael Park Kindergarten
BYO lunch. Cost: \$50 per person.

Please email hello@leahcorbett.co.nz to register. Spaces are limited.

RSST PRESENTS...

PARENT EDUCATION PROGRAMME

Bringing together whānau & community to experience Steiner Education.

BLACKSMITHING with Luis Bernal

SATURDAY, 6th SEPTEMBER 2025

9am-4pm

Forging mild steel to make a candle holder
or fire poker / hook / utensil or similar.

Venue: Metalwork Room, Michael Park School

Cost: \$40.00 Bring your lunch

RSVP: To register for our parent workshops,
please email Haidee in the school office:

haideet@michaelpark.school.nz

*Please note that your place is not confirmed until payment is received.

Biography Workshops

Making Meaning of Your Path Through Life



Next workshop:
October 16th (evening)
17th, 18th and 19th (full days)

Stories are transformative. and our personal life story is the most transformative of all. In this workshop we engage with our own and each others life stories, to help awaken the capacity for shaping our futures more consciously.

We work with

- seven year developmental phases
- artistic processes
- information on other cycles and development phases of life
- individual questions to facilitate insight

The course runs as a small group, with three others, over 1 evening and 3 consecutive days.

This Anthroposophically-based personal development method is a worldwide movement, giving us insight into how Steiner Education truly is an education for life.

For enquiries please ring Rhyll on 027 344 9847

or email rhyll@miracompanions.co.nz

Cost is on a sliding scale of \$575 - \$380



THE CHRISTIAN COMMUNITY
MOVEMENT FOR RELIGIOUS RENEWAL

The Priesthood of All Within the New Mysteries

Continuing 2025 Programme
The Disciple Whom Jesus Loved

July 25-27 Parsifal and the Holy Grail

Aug 29-31 King Arthur and Celtic Christianity

Sept 26-28 The Knights Templar and the Forces of Evil

Oct 31 - Nov 2 The Dead Need Us: Healing
Misconceptions of the Threshold

Nov 28-30 The School of Chartres

Your donations support our continuing work throughout New Zealand.
Thank you for your support.

Christian Community Inc 03-0259-0112730-04 (Auckland)

Attendance is by registration and donation
Suggested donation between \$100 and \$175 for each weekend
(all meals included).

For further information or to register, please contact;
hartmutborries@mailbox.org 021 259 8555
or cheryl.n.p@gmail.com 021 023 20932