



### COMING EVENTS

[Click here to view the full calendar online](#)

**Wednesday 30 July** Helping Hands meeting 6.30pm

**Friday 1 August** Class 3 Lunch Bar

**Wednesday 6 August** Open Day

Kia ora e te whānau,

What a beautiful week it has been, blessed with glorious winter sunshine and a deep sense of community spirit here at school.



We began the week with a special pōwhiri to welcome our new staff and students. It was a moving and heartfelt occasion, filled with warmth and manaakitanga. We are delighted to welcome several new colleagues into our teaching team. In our kindergarten, we greet Chantelle Smith, Tina Chen, and Fern Winslow, each bringing their own unique gifts and energy to our youngest learners.

We also warmly welcome Gabrielle Reid, our new Head of Drama, whose expertise and creative leadership will no doubt inspire our tamariki. Joining us in the Lower School music programme is Abi Ortiz, who will be with us for the remainder of the year while Mary Chen takes maternity leave. We send our love to Mary, who gave birth to a beautiful baby girl last week, and wish her all the best as she embarks for this exciting new chapter.

This week was also a very special one for our wider school community. On Wednesday, we had the privilege of hosting over 50 senior leaders and principals from 30 secondary schools across Tāmaki Makaurau. As part of this gathering, we were honoured to welcome Dr Hana O'Regan ONZM as the keynote speaker for a powerful workshop on *Te Tiriti o Waitangi*. Her kōrero was both inspiring and deeply thought-provoking, sparking meaningful reflection and connection.

And what a perfect way to round out the week - this morning's early Matariki breakfast was a beautiful celebration of renewal, remembrance, and hope. Thank you to all our whānau who braved the morning chill to join us. Your presence helped make the event so special.

Wishing you all a restful and joyful weekend ahead.

UP THE WAHS

Ngā manaakitanga,  
Desmond Pemerika  
Principal

### DESKS FOR SALE

\$20 per desk, with optional free wooden chair. These modular junior desks are great on their own, either as a desk or a coffee table, or in configurations of two, three or more to make larger tables. Could be great upcycling project! Buy 5 and get one free. Contact Erin in the school office: [erinw@michaelpark.school.nz](mailto:erinw@michaelpark.school.nz)







## TE AO MĀORI

A space dedicated to promoting te reo me ōna tikanga Māori

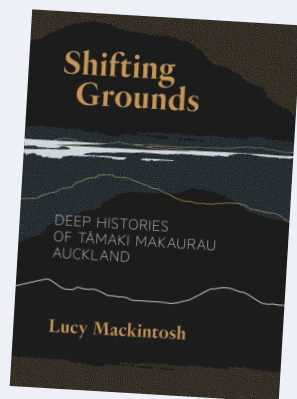
### WHAKAPAPA OF A NAME

Exploring the whakapapa and pūrākau of our harbours and waterways

It was a privilege to be able to attend the hui with Hana O'Regan yesterday, and it was synchronistic that one of her 'calls to action' to all the school leaders from around Tāmaki Makaurau who attended was to find out the history of our kura and surrounds, in order to inform our future direction.

This week's Matariki challenge for staff was to take some time to explore some of the whakapapa and pūrākau of the harbours and waterways in our rohe. From very nearby at Waiatarua to Waitematā, Manukau, Kaipara and the Tāmaki River, there are such rich stories to both the naming and the history of these waterways.

We have a pukapuka in our library *Shifting Grounds* by Lucy MacIntosh and [here is a link](https://www.youtube.com/watch?v=YHQfp7-6ocg) to her speech at the Auckland Writers Festival a few years ago. Her kōrero gives layers of historical meaning to some of the places that we all spend time in.



<https://www.youtube.com/watch?v=YHQfp7-6ocg>



## *Class 3 Lunch bar* *Friday 1<sup>st</sup> August*

### *A warm* *Winter Feast*

*with savoury and sweet*  
*options including gluten*  
*free and dairy free*  
*Come and get yourself a*  
*treat and support Class 3*

## INTERNATIONAL YOUTH CHOIR

Vivian (Class 3) and Amu (Class 5) recently participated at the Shenzhen International Youth Choir Competition in China. Their choir, which is conducted by their father, Wei, won first place Champion in the children's category 2. One of their highlights was performing the New Zealand national anthem.

Their father, Wei, was awarded Best Conductor of the Entire Competition!

Congratulations, whānau, what a phenomenal result!







## Helping Hands of Michael Park

### MPS back at the Fairy and Pirate Festival!

Helping Hands are leading another magical MPS stall at the Ellerslie Fairy and Pirate Festival this September! Our unique stall was a hit last year - we got great feedback, stood out in the crowd, and connected with local families while clearing up a few myths (we're not private or full!). This year, we're back with a lucky dip and a table full of festival-inspired goodies - perfect for little ones with a few coins while we chat to their grown-ups.

We're on the lookout for festival-themed donations - think wooden swords, crowns, eye patches, ladybird rings, fairy doors, wands, tiny wooden boats, and headscarves. If you're a crafter, we'd love your creations - and if you can make more than a few, we're happy to cover material costs.

We know the fair is fast approaching and everyone's busy, so we're not asking for boxes of stock - our aim is around 200 items total. A handful from a few people, plus a few more from our super-crafters, will set us up beautifully.

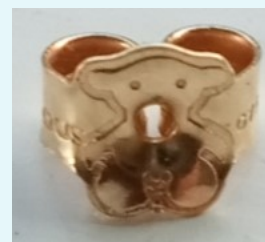
Got something to offer or keen to help? Please email [reneecoulter@gmail.com](mailto:reneecoulter@gmail.com).



## COMMUNITY NOTICEBOARD

*Looking to support trades and services within our school community? [Click here for the Community Skill Share list.](#)*

- **Have you seen me?** A distinctive bear shape ear ring butterfly was lost around the gymnasium / changing rooms yesterday. "Tous" is written around it. If you see or find this taonga can you please take it to the office? Thank you!



- **Are you looking for a rural lifestyle in the city?** A furnished room has become available and we are now looking for someone to join our haven. You will share the home with a quiet and respectful flatmate in his late 20s. Our little oasis is filled with fruit trees, veggie patches and a garden overlooking the estuary with friendly roaming chickens. There is also a good natured dog and a cat living on the property. Contact Nad 021 024 01291 to know more and meet.
- **Looking for a single studio or bedroom** with an ensuite somewhere close to Michael Park School. Thank you!  
Tina [tina.chen96@yahoo.com](mailto:tina.chen96@yahoo.com) 0288 522 6572

Contact the editor, Dana Marcroft at [fridayflyer@michaelpark.school.nz](mailto:fridayflyer@michaelpark.school.nz)  
Guideline 150 characters maximum please. Deadline midday Thursday.

## FIREWOOD FUNDRAISER

### Thank you, MPS community!

A huge thank you to everyone who supported our MPS firewood fundraiser! We delivered 12 loads and raised \$600 - \$300 each going to Class 2 and Class 6.

If the sun keeps shining and you're still keen, we've got a couple of loads left - get in touch! [reneecoulter@gmail.com](mailto:reneecoulter@gmail.com)





# DOLL MAKING COURSE

WITH NINA HAMILL

MAKE A BEAUTIFUL WALDORF STEINER INSPIRED  
DOLL FOR YOUR CHILD OR WHANAU  
IN JUST ONE WEEKEND

AUGUST 9 & 10  
9AM - 1PM BOTH DAYS

COURSE COST : \$160  
TEA AND BISCUITS PROVIDED

MICHAEL PARK HANDWORK ROOM

RESERVE YOUR PLACE NOW: [NININOSCH@GMAIL.COM](mailto:NININOSCH@GMAIL.COM)

A MINIMUM OF 4 DOLL MAKERS NEEDED FOR THE COURSE TO GO AHEAD



WALDORF WAYFARERS SINGERS FROM AUSTRALIA, TAIWAN, INDIA AND JAPAN PRESENT



## VOX HUMANA

CONTEMPORARY AUSTRALIAN CHORAL MUSIC

WITH CHAMBER ORCHESTRA  
DIRECTED BY JUDITH CLINGAN AM

FEATURING A NEW WORK OF MUSIC THEATRE *THE PROPHET*  
WORDS KAHLIL GIBRAN | MUSIC JUDITH CLINGAN

FRIDAY 8 AUGUST 6.00PM  
MICHAEL PARK STEINER SCHOOL HALL | 55 AMY STREET ELLERSLIE

\$30 FULL | \$20 ADULT CONCESSION | \$10 UPPER SCHOOL STUDENTS | LOWER SCHOOL STUDENTS FREE  
CASH OR CARD AT DOOR | ENQUIRIES AND BOOKINGS 0410 617 427 OR [JUDITHCLINGAN@ME.COM](mailto:JUDITHCLINGAN@ME.COM)

# PIANO

*Lessons*

WITH SHUNSUKE YOSHIOKA

Classical piano lessons by a Japanese pianist, provides face to face sessions with the best teaching method that suits you. Open for both beginners and advanced students.

30MIN SESSIONS  
FOR \$30

Questions and enquiries

Michael Park School

021 0321 402

[Idapiano9@gmail.com](mailto:Idapiano9@gmail.com)

Made with PosterMyWall.com



THE CHRISTIAN COMMUNITY  
MOVEMENT FOR RELIGIOUS RENEWAL

## The Priesthood of All Within the New Mysteries

Continuing 2025 Programme  
The Disciple Whom Jesus Loved

July 25-27 Parsifal and the Holy Grail

Aug 29-31 King Arthur and Celtic Christianity

Sept 26-28 The Knights Templar and the Forces of Evil

Oct 31 - Nov 2 The Dead Need Us: Healing  
Misconceptions of the Threshold

Nov 28-30 The School of Chartres

Your donations support our continuing work throughout New Zealand.  
Thank you for your support.

Christian Community Inc 03-0259-0112730-04 (Auckland)

Attendance is by registration and donation  
Suggested donation between \$100 and \$175 for each weekend  
(all meals included).

For further information or to register, please contact;  
[hartmutborries@mailbox.org](mailto:hartmutborries@mailbox.org) 021 259 8555  
or [cheryl.n.p@gmail.com](mailto:cheryl.n.p@gmail.com) 021 023 20932