



COMING EVENTS

[Click here to view the full calendar online](#)

Monday 2 June	King's Birthday Public Holiday
Tuesday 3 June	Fair Coordinators Meeting 6pm
Friday 6 June	Whitsun Festival
Friday 6 June	Class 11 Nacho Lunch Bar
9-13 June	Lower School Dental Van
Tuesday 10 June	Parent Evening - 'Study Skills'
Wednesday 11 June	Open Day
Friday 13 June	Pyjama Day
Friday 13 June	MPS Concert
Saturday 14 June	High School Ball

Kia ora e te whānau,

*Titiro whakamuri kokiri whakamua -
Look back and reflect so you can move
forward.*

It's hard to believe we're already over
halfway through the term - time really
seems to be flying!

At the start of this week, I had the privilege of attending the
National Secondary School Principals' Conference at Te Papa. It
was a wonderful opportunity to connect with other principals
from across the country to discuss, share, and workshop the
current issues facing our schools. It's always encouraging to see
the passion and commitment shared across the sector.

Speaking of opportunities, you may have noticed that Whaea
Kura was away from school for the first three weeks of the
term. That's because she has been studying towards a Graduate
Diploma in Primary Teaching, which adds great value to her role
as our school librarian. I want to reassure you that Kura has no
plans to go anywhere—as she communicated to me just the
other day, "I love my job."

A big welcome back to Class 4, who returned today from their
second class camp of the year. We're looking forward to
hearing all about their adventures!

Wishing you all a safe and relaxing long weekend.

Ngā mihi nui,

Desmond Pemerika - Tumuaiki



FAIR MEETING (CLASS COORDINATORS)

On Tuesday 3rd June we will be holding our first Fair
Coordinators meeting at 6.00pm in the staff room. If the class
fair coordinator cannot attend, then at least 1 representative
from that class must attend.

Any queries please contact fairadmin@michaelpark.school.nz
Looking forward to seeing you then.

OPEN DAY 11 JUNE



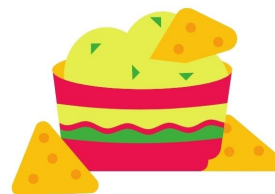
MICHAEL PARK
A RUDOLF STEINER SCHOOL

michaelpark.school.nz



Class 11

NACHO LUNCH BAR



**SWEET & SAVOURY BAKING
HOT CHOCOLATE**

Friday 6th June 2025





PART-TIME EDUCATIONAL SUPPORT WORKER IN KINDERGARTEN

Michael Park Kindergarten is looking for a warm individual with excellent organisational and problem-solving skills as an educational support worker to provide health and learning support for five-year-old tamariki with extra needs.

This is a part time position 4 days a week from 9.30am - 12.00pm. The support required will be feeding (tube) as well as educational (speech and language and social) support. As such, a high level of oral communication and initiative is required as well as the ability to work well as part of a team.

There will be regular meetings with kaiako, whānau and CCS disability action to monitor and review progress and educational plans.

Working in the kindergarten the educational support worker will be willing to undertake professional learning and development relating to their tasks and responsibilities, including those associated with the Special Character/philosophy as required.

Ideally this person will be prepared to continue supporting this tamariki while she is in the kindergarten for the next 2 and half years. The position will start from the beginning of term 3 on Monday 14th July 2025.

For further information or to apply please contact:

Stacey McManus

Kindergarten Manager

Phone: 095258996 x 520

staceym@michaelpark.school.nz

TE AO MĀORI

A space dedicated to promoting te reo me ōna tikanga Māori

This year's Matariki theme has been revealed, and it is *Matariki mā Puanga*.

This theme has a focus on celebrating the diverse ways that matauranga (traditional knowledge) and traditions and tikanga are held by people and iwi across the motu. And the phrase can be interpreted more broadly to embrace the idea that this is a celebration for us all; we can celebrate the different backgrounds and practices that shape our identities and yet maintain the essence of Matariki – to look back, to celebrate the present, and to look forward positively to the future.

Want to know more about Puanga? There is some interesting information here:

<https://www.tepapa.govt.nz/discover-collections/read-watch-play/matariki-maori-new-year/matariki-regional-variations/difference>

Over the next few weeks, as we lead into Matariki, we will be sharing some recipes, crafts and celebration ideas for you and your whānau.

WHAKATAUKĪ O TE WĀ:

Mā te kimi ka kite, ma te kite ka mōhio, ma te mōhio ka mārāma.

Seek and discover, discover and know, know and become enlightened.

This whakataukī feels fitting for the period of self-reflection that is a vital part of the Matariki celebration – what might we want to work on, let go of, do more of in the year to come?

ĀERENGA KŌRERO O TE WIKI

In our lower school classes we play a game in te reo Māori lessons called Matau – Mauī Eventually we will play this with rākau and full sentences, but we are working our way up to that. Here are some of the sentences we will use, if you want to use them with your tamariki when you are out and about.

Haere ki te taha matau – go to the right

Haere ki te taha mauī – go to the left

Huri ki te taha mauī – turn to the left

Huri ki te taha matau – turn to the right

SPOKEN WORD TEAM

Last week on Wednesday evening, our Spoken Word team competed in the heats of 'WORD - The Front Line' – a poetry slam for school students. The calibre of the poetry was exceptional, the camaraderie was infectious, and our poets were totally impressive!



We're looking forward to more chances to perform as the year goes on.



This year the Charity Team is bringing back....

PJ DAY!!

Friday June 13th

There'll be a Midnight Feast at the lunchbar only at Morning tea Time!! Bring some money for lots of yummy treats and hot chocolate

Come to school wearing your PJs and if you can, please bring a NEW SET OF PJs which will be collected & donated to KIDZ FIRST at Middlemore Hospital - We will have collection points located throughout the school

In addition, sign-up booklets will be available on this day so you can participate in the 40-HOUR CHALLENGE by World Vision to help raise money for families in the Solomon Islands. See more info on the World Vision website, additionally there'll be more info promoted by the Charity Team...coming soon!!



We will have a sign-up station under the rotunda on Friday 6th June 2:10pm and 3:00-3:30pm

A beautiful rainbow stretched over our kura this morning as we head into the long weekend.



2025 **A Starry Night** 14 06

Michael Park School Ball

Arakana Yacht Club 8/10 Tamaki Drive Orakei

Doors 7 - 7.15pm tix \$85

Bank Transfer To:
Michael Park School Board of Trustees
02 - 0256 - 0235647 - 00

Michael Park School Ball
☆ 2025 ☆

A Starry Night

Doors open 7pm - 7:30pm, last song at 10.50pm

Invitation for Classes 9 - 12 and their plus ones

Akarana Yacht Club
8/10 Tamaki Drive
Okahu Bay, Orakei

Saturday
14th of June

Tickets \$85
Bank Transfer to:
Michael Park School Board of Trustees
02 - 0256 - 0235647 - 00
Reference/Particulars : Your name, number of tickets + 'Ball'

If you have any questions or need a permission slip, feel free to reach out to any of the Ball Committee

See you there

Homestay Family Needed



SHOW OUR STUDENTS SOME KIWI HOSPITALITY

IF YOU ARE A CARING KIWI FAMILY AND HAVE A SPARE ROOM, PLEASE GET IN TOUCH WITH US TODAY!

Learn about a new culture
Share your culture
Show off the beauty of NZ

Contact Maryam for more details
021-980-718
maryam@studywithkea.com

Requirements:

- Bedroom with all the necessities
- Provide three meals and some snacks each day
- Include them in your family activities
- Take them local sightseeing

In return:

- Earn well-remunerated, tax-free income
- And have lots of fun and a rewarding experience along the way!

FAQs

- How long are these hosting experiences?** Generally from four nights up to 14 nights. You will be hosting one or two (or maybe three) students depending on your space availability.
- Can my homestays share the bedroom?** If you get two Students at the same time, they can share the bedroom but must have two separate beds.
- I have one Queen or King-sized bed in my spare room, can my homestays share the bed?** No! The beds can be in form of two single beds, or a bunk bed or a trundler bed.
- What do my homestay students do during the day?** Students will attend Michael Park School during the day and will spend the afternoon with their host families.
- What does the fee that I'm paid include?** The fee paid to you includes three meals a day with snacks, transport and some local sightseeing in your free time.
- Do the whole family have to be involved in this hosting experience?** A full family inclusion is required. Basically looking after these students like your own children.
- What are the arrival and departure times and days of your next group?** You will meet your homestay students for the first time on Sunday 15th June at around 6:00pm and you will say goodbye to them on Saturday 21st June at around 9:00am.
- How much will I be paid?** You will be paid \$960 for hosting two students at the same time. Full fee will be paid to you on Friday 20th June.

RSST

Seeking New Members

If you are passionate about Waldorf Steiner education, here is an opportunity to be part of defining our school's future.

The Rudolf Steiner Schools Trust is one of the governing bodies of the school in partnership with the Board of Trustees and College of Teachers.

We are seeking members to join us and step into roles in 2025/2026.

Our main objectives are to establish, raise and provide the means and management for kindergarten and schooling according to the methods advocated by Rudolf Steiner.

The following fields of interest/experience would be beneficial:

- Waldorf Steiner
- Parent Education
- Fundraising
- Property Maintenance
- Governance

To be eligible to apply, you:

- Are committed to Steiner education and Michael Park School.
- Have sufficient time and expertise to fulfil your role fully.
- Are a critical thinker who can contribute to robust conversations.
- Ability to access email and dropbox.
- Must be at least 18 years of age.

Can attend:

- Approximately 10-12 meetings per year.
- Significant school events.

If you are interested in joining or learning more email us at rsst@michaelpark.school.nz



MANY THANKS FROM THE RSST

Do you enjoy helping others?

Is giving back to the community something you're passionate about?

Perhaps you want to spread awareness about local/global issues?

CHARITY TEAM RECRUITMENT

THE GIFT OF HOPE

give hope - grow happiness

Well the Gift of Hope Charity Team is looking for someone like YOU !! Come and join us in running fundraisers and spreading awareness for good causes throughout the year - we're all about giving back to the community

Feel free to reach out to any of the Charity Team members, Tilly or Amberley (who are this year's senior leaders) if you have questions and/or would like to join us!!

For anyone in Class 6 - 12 !!

PS it looks good on your CV too

PARENT EVENING

WITH KAREN TUI BOYES

AUTHOR OF 'STUDY SMART' & MULTI-AWARD WINNING SPEAKER



SPEAKING ON:
"TIPS & STRATEGIES FOR SUCCESSFUL STUDYING & PASSING EXAMS"

As seen on
The Project,
Seven Sharp
and heard on
RadioNZ

You'll learn about...

- the 4 phrases of studying
- ways to Study Smarter
- how the brain learns and remembers
- setting up an effective study environment
- strategies to assist at home

Tuesday 10th June
6:30pm - 8pm

MPS Auditorium
Free Entry

The Dhal Wala

MPS Lunch Bar

The Dhal Wala serves delicious homemade lunches for \$5 a bowl, from Monday to Thursday. Also available after school - dinner sorted!

Most ingredients are vegan, gluten & dairy free & 100% fabulously made!



Discover Our Winter Menu

We are thrilled to introduce our new winter menu featuring a variety of flavoursome dishes to keep you warm and satisfied throughout the season. Check out what we have in store for you by downloading our new menu here:

Dhal Wala Winter Menu

We are excited to add **Pasta Bake Thursday!** We have GF & traditional pasta bakes which are both vegan (vegan cheese) & a yummy potato cheese bake - also vegan. If you are after snacks, we have **samosas** and **Mumbai potato croquettes**, as well as **juicies** and **blackcurrant hot toddies!**

Get your orders in: [Visit the Dhal Wala website](#) for more info or to pre-order.