



## COMING EVENTS

[Click here to view the full calendar online](#)

11-13 March	Class 10 Camp
Thursday 13 March	Class Photos
Friday 14 March	Athletics Day for Classes 5-12
Saturday 15 March	Outdoor Classroom Parent & Child Workshop
Wednesday 19 March	Open Day
Thu 20 & Fri 21 March	Class 12 Play 7pm
Friday 21 March	Harvest Festival & BBQ

Kia ora koutou whānau,

As we find ourselves halfway through the term, it is hard to believe how quickly the time has passed. We are now entering Autumn, and with it comes a sense of change and excitement within our kura.



This week, Class 4 had the fantastic opportunity to go on camp, and we are pleased to announce that they have safely returned today, undoubtedly with unforgettable memories and experiences. We look forward to hearing all about their adventures.

Next week, it will be the turn of Class 10, who will be heading off on camp as part of their Main Lesson. We are confident this experience will further enrich their learning journey and provide them with valuable insights.

In addition to these wonderful excursions, students are eagerly anticipating the upcoming Middle School and High School Athletics Day, which will take place next Friday. This is always an exciting event that fosters school spirit, teamwork, and a healthy sense of competition. We encourage everyone to participate and support their peers.

As always, thank you for your continued support and involvement in our school community. We look forward to the rest of March and all the opportunities it will bring.

Have a wonderful weekend.

Nga mihi nui,  
Desmond Pamerika  
Tumuaki

## MICHAEL PARK ATHLETICS DAY

A reminder to everyone that this event is taking place next **Friday, 14th of March** at Lloyd Elsmore Park, for Classes 5-12. Students need to be at school and in Kaitiaki at normal time and will head down to the buses from there.

Some important things to remember:

- Ensure students have plenty of food and water.
- Shade is provided but hats and sunscreen are a must on the day.
- Students are highly encouraged to dress up in their House colours:

**Jacaranda**

**Maple**

**Kowhai**

**Magnolia**

- Shoes are recommended for track activities to protect their feet.
- All students will return to school by bus and be released at **3pm**.

This is always a fun and competitive event for our students and parents are welcome to come down to Lloyd Elsmore Park and support if they wish.

Any questions, please email Ciaran Overton for details.

[ciarano@michaelpark.school.nz](mailto:ciarano@michaelpark.school.nz)

## CLASS PHOTOS

Class photos will be taken by PhotoLife on **Thursday 13<sup>th</sup> March**. Any students who missed having their portrait/ID photo taken on 26<sup>th</sup> Feb can also have their individual photo taken

After the photos are taken you will receive your unique keycode where photos can be viewed and purchased online. Team and sports photos will be taken later in the year.

Please help us by making sure your child is in correct dress code. For any queries, please contact Brenda at reception.

[brendad@michaelpark.school.nz](mailto:brendad@michaelpark.school.nz)

## CLASS 12 PLAY 'THE VISIT'

Class 12, in their final year, takes on Friedrich Dürrenmatt's *The Visit*, transforming the stage into the crumbling town of Gullen. The students bring to life the townspeople's desperation, their shifting morality, and the chilling power of Claire Zachanassian's wealth.

With a minimalist set emphasizing decay and looming greed, the performance focuses on the tension between justice and corruption. Alfred III's tragic fate unfolds with eerie inevitability as the ensemble gradually succumbs to temptation.

Through powerful movement, lighting, live music, and insightful costume, the students present a gripping exploration of human nature, making their final-year production unforgettable.

# THE VISIT

20-21 MARCH 2025  
7PM-8:30PM  
MICHAEL PARK SCHOOL  
AUDITORIUM



**TICKETS**  
CHILD - \$10  
ADULT - \$15

CLASS 12 PRESENTS THIS ROMANTIC TRAGEDY  
SEASONED WITH COMEDY,  
SET IN THE MANAWATŪ-WHANGANUI  
REGION OF AOTEAROA

**givealittle**  
POWERED BY perpetual guardian

Support for MPS alumna - and  
current MPS parent - Star Olson

A **Givealittle** page has been set up  
to help support Star and her family  
with the costs of cancer treatment.

Thank you, MPS whānau.



## Harvest Festival BBQ

Friday 21st March  
on the school field at 2.10pm.

A chance for our community  
to come together, as well as  
the opportunity to meet  
our Senior Leadership Team,  
Board & RSST members.

We will have a free sausage sizzle  
(plant-based & meat)  
& ice cream.

## Mentor Poem Workshop with Whaea Kura

Last week a small group of Class 6 students participated in a poetry workshop, where they used a published poem, *That Was Summer* by Marcia Ridlon, as a starting point to write their own poems about their summer memories.

This is one of the poems produced at the workshop, written by Mishka, Class 6:

### *That was summer*

inspired by the poem by Marcia Ridlon

*Have you ever smelled summer?*

*Sure you have.*

*Remember that time*

*when you went to your grandparents  
and stayed with your cousins,*

*Jumped off the jetty and smelled the salty sea breeze?*

*Or that time when you went to the beach  
and felt the coarse sand*

*Under your hands and the crash of the surf  
and the smell of sunblock wafting from its container.*

*Do you remember smelling the hazy  
steam rising off tarmac after a sun shower?*

*That was summer.*



## Helping Hands of Michael Park

### Introducing 'Helping Hands of Michael Park' - Our Rebranded Parent Action Group!

Our school's parent group has recently rebranded with a fresh new name - Helping Hands of Michael Park. Previously known as the Parent Action Group, we wanted a name that better reflects what we're about. Our purpose is to assist, uplift, and nurture our school and its students, fostering a strong and connected community. We continue the legacy of the dedicated parents who helped build our kura and remain focused on action, solutions, and making a lasting impact.

We now have a whakatauki to guide us and keep us inspired:

**Kahore taku toa i te toa takitahi, he toa takitini.**

**We cannot succeed without the support of those around us.**

Being part of Helping Hands doesn't mean committing countless hours - whether you can assist once or twice, or take on a larger role, every contribution makes a difference. We are a fun, energetic team of parents, grandparents, staff, and alumni who support the school through fundraising, community-building, and events.

We welcome all who want to get involved—whether in big or small ways. If you're ready to lend a hand, we'd love to have you!

This is not a complete list, but some of what we have planned for this year:

- Have a stall at the Ellerslie Pirate and Fairy Festival
- Create a community recipe book as a fundraiser
- Host an evening parenting talk
- Host a sound bath meditation and yoga wellness event
- Create a useful alumni database and showcase many of our talented alumni
- Continue the gardening working bees around the school

If any of these projects or events spark something for you please contact Leah Corbett, [leahd83@gmail.com](mailto:leahd83@gmail.com)

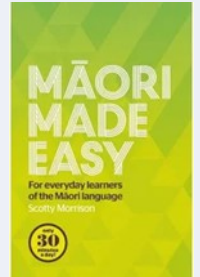


## TE AO MĀORI

A space dedicated to promoting te reo me ōna tikanga Māori

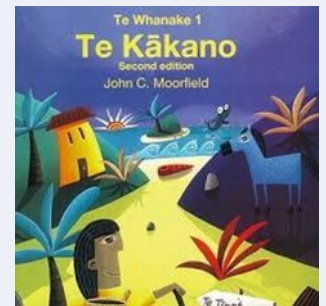
Are you keen to take up your te reo Māori journey to support your tamariki in their learning? While nothing can beat in-person learning, the wait lists can be long for classes so here are some self-paced resources that could be just what you have been looking for:

**Māori Made Easy** book series – by Scotty Morrison, which is also available in audiobook form.



**Toro Mai** - Scotty and Stacey Morrison also have an online self-paced course - [toromai.massey.ac.nz/login/index.php](http://toromai.massey.ac.nz/login/index.php)

**Te Whanake** - this website supports the exceptional learning programme based on the series of books written by John Moorfield. [video.tewhanake.maori.nz](http://video.tewhanake.maori.nz)



Some of the later programmes from this series are also still available on Māori TV on demand [maoriplus.co.nz/show/toku-reo](http://maoriplus.co.nz/show/toku-reo)

**Everyday Māori** website, books and podcasts – Hemi Kelly [everydaymaori.com](http://everydaymaori.com)



**FOSSIL BAY**  
school & kindergarten

# HARVEST FAIR

**SUNDAY 30TH MARCH**  
10:00am-3:00pm

**Live Music • Old Fashioned Games**  
**Great Food • Story Telling**

58 Korora Road, Oneroa,  
Waiheke Island

# Main Lessons

For Class 7's Renaissance Main Lesson, held over the past few weeks, we've been learning about the Middle Ages. We formed groups and made projects based on the time period, which we presented in front of the class. This is an overview of everyone's projects.

One group made white and black rye bread and told us some facts about how it was made and the type of people who ate it.

Another group, appropriately named 'The Medieval Seamstresses', made a dress for a middle-class medieval woman. One of the girls in the group modelled the dress on the day of our presentation. A second group made a blue velvet medieval dress with the help of Mrs. Mullany. The girls in this group also took turns modelling the dress, while another made a poster describing the life of a lady in the Middle Ages.

One group made a mini model of a medieval castle out of air-dry clay and painted it. They also explained what life was like in a castle. Another student made a large painted cardboard model of a medieval castle.

A life-sized sword and shield was made out of tinfoil, rope, cardboard and coloured paper.

A recipe book was created of recipes from different levels of society from medieval times. It also included recipes that students found from their heritage.

One group made a presentation board with some different designs that decorated shields, and told us what each symbol meant. Another group made a set of instructions on how to play a new game they made called 'Medieval Chess'. They also set up a tournament.



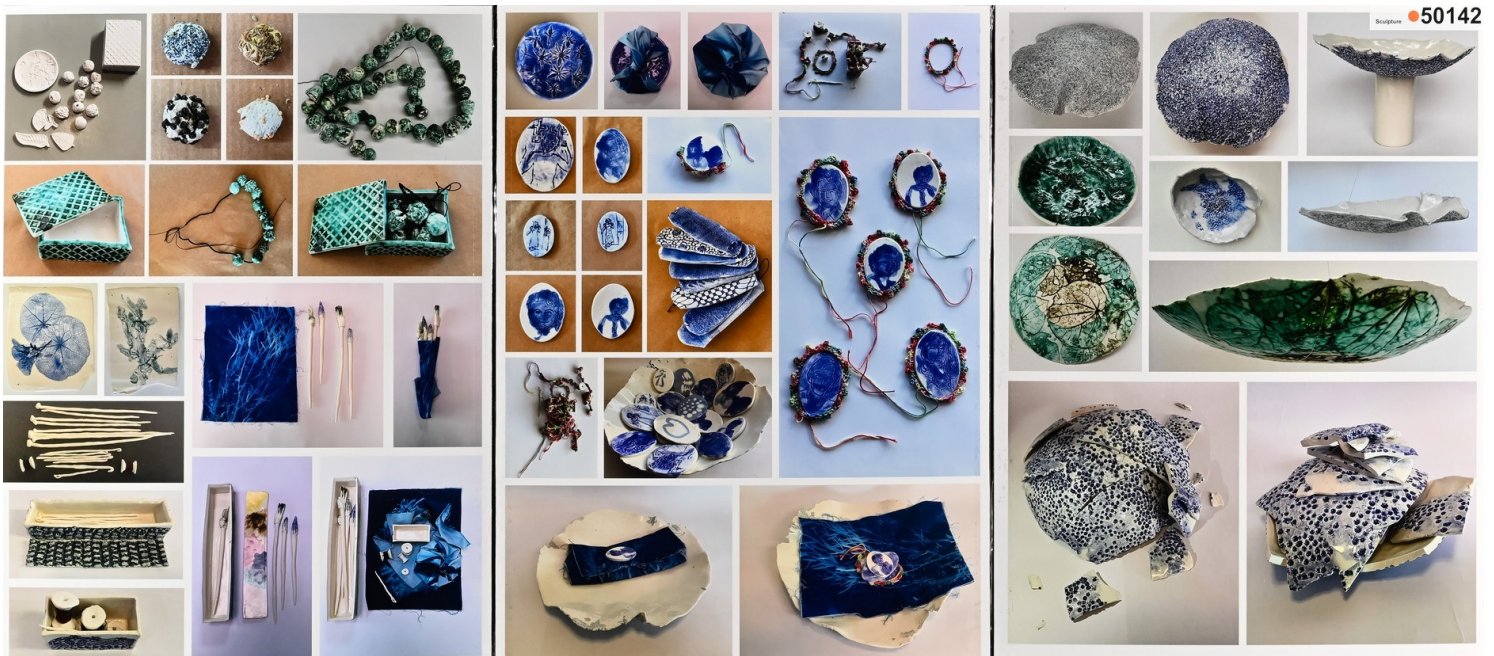
We would like to thank Mrs Mullany and our class teachers, along with our parents, for all the support they gave us to finish our projects.

*Written by 'the best Quadrio in the class', aka Tui, Hannah, Wilder and Milan*

## NZQA TOP ART EXHIBITION

Congratulations to Lily Dickinson who had her Level 3 Sculpture boards selected for this year's NZQA's Top Art touring exhibition. Lily titled her submission "My Mitacondrial Whakapapa". She explains the ideas and processes behind it in the following words,

*"I wanted to look at what gets passed down through the female line of my ancestors - my nanas, my great nanas, and my mum to my sister and myself. It is the ideas and knowledge that connects us all. I used ceramic materials, impressing hand modelling and slab building techniques in my work. Clay is a material you need to understand and respect, because any work you make with clay has a 50/50 say in how it turns out".*



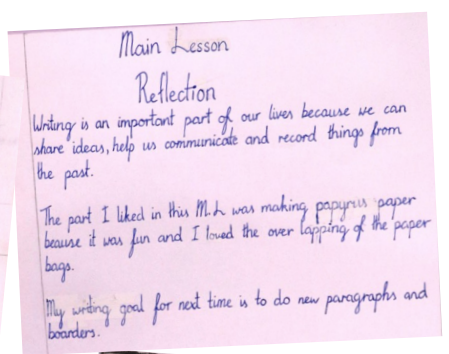
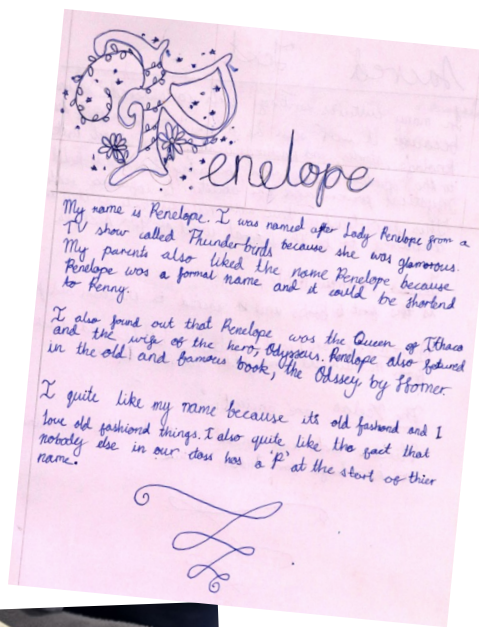
# Main Lessons

**Class 5** began their year, studying The History and Art of Writing through hands-on activities. For some children, writing, as a way of communication, is mundane; however, as they experienced each step of its evolution from cave painting to exquisite sacred texts, they learned to appreciate the artistry, dedication and skill involved.

On Thursday, with Class 10, the children witnessed this exquisite artistry in the sacred Medieval manuscripts held in the Auckland Library. They were impressed by the penmanship and the accuracy required to produce them with such precision. On returning to school, to mark this special occasion, the children used their newly acquired fountain pen and experienced the smooth, fluid ink flow and the quality craftsmanship of the pen, writing their Name story. Now mustering all the care, attention, and artistry, they can connect with their writing on a personal level, care for their tools and work towards the accuracy required to produce legible writing.

**Class 10** opened 2025 with an Art History Main Lesson Catacombs to Cathedrals and Palaces. Over the four weeks they explored and experienced the development of paint media and painting techniques from Early Christian times, through the Middle Ages and into the Renaissance. Knowledge and appreciation was gained from three main activities; making paint pigments from a variety of soils and vegetable matter and using them to emulate catacomb frescoes, mixing paint pigments with egg to create tempera paintings of Medieval illuminated letters and using oil paint with linseed - for many, for the first time - to reproduce Renaissance master pieces.

The main lesson closed with a successful visit to the Auckland Library with Class 5 to see first-hand a selection of Medieval manuscripts and their beautiful painted illuminations and illustrations.





## COMMUNITY NOTICEBOARD

- Wendy, Class 9, has been offered an amazing scholarship at the San Francisco Ballet School! To help her get there, she has a fundraising page: [givealittle.co.nz/cause/help-a-nz-ballet-dancer-go-to-san-francisco-ballet](https://givealittle.co.nz/cause/help-a-nz-ballet-dancer-go-to-san-francisco-ballet)
- Any Michael Park lower and middle school students interested in playing hockey? Grammar Windsor Hockey is running training sessions for the coming three 5:30 pm Tuesdays at Auckland Grammar School turf. There are spaces for the Years 2-4 and Years 7-8 grades, but just two spaces in Years 5-6. Link to join: [www.playhq.com/hockey-new-zealand/register/eee1b5](https://www.playhq.com/hockey-new-zealand/register/eee1b5) Essential kit on the turf is mouth and shin guards please for safety. Contact Doug Ray, Juniors Coordinator ph 021 301 958
- The Weet-Bix Kids Tryathlon is coming up next month! We encourage everyone to join in by signing up and selecting **Michael Park School** as your school group. Even if you've already registered without choosing our group, you can still update your entry. Remember, schools with high participation can win prizes for our school.

### Event Details

**When:** Sunday, 30th March 2025

**Where:** Pt England Reserve, Pt England (Central East Auckland)

**Entry:** <https://tryathlon.co.nz/locations/central-east-auckland/>



We'll have a tent set up where parents can relax and hang out while cheering on our kids. Thank you!

Contact the editor, Dana Marcroft at [fridayflyer@michaelpark.school.nz](mailto:fridayflyer@michaelpark.school.nz)  
Guideline 150 characters maximum please. Deadline midday Thursday.

Sorry, we no longer publish graphic advertisements, except for Michael Park School activities, class fundraisers and Steiner-related events.

# Parenting Today

16th MARCH  
10am - 11am



## Rudolf Steiner House

Join the Steiner parent's gathering!

He taonga te mokopuna, kia whāngaiā, kia tipu, kia rea

A child is a treasure, to be nurtured, to grow, to flourish

## The Journey of Waldorf Parenting

Join us in a welcoming space where parents can share experiences and explore the unique task of parenting, guided by Waldorf-inspired wisdom.

### Navigating the Six-Year Change

Engage in a meaningful discussion about the transformative phase of the six-year-old change in childhood. Learn from educators, exchange insights with fellow parents, and discover Waldorf-inspired methods to support your child's growth during this pivotal stage.

Hosted by Waldorf educators.

STACEY MCMANUS  
& MICHELLE MULLANY

For more info

d.brinsden@titirangi.steiner.school.nz  
michellem@michaelpark.school.nz

104 Michaels Ave, Ellerslie, Auckland

Sunday 16th March 10am - 11am  
Followed by refreshments. Adults only.  
Donation \$10-20



Presenting the new...

## Parent and child mid-term Workshops with Luis Bernal

Come bond with your child and spend an afternoon of crafts, fire-making and cooking. Come learn new skills in a joyful creative community atmosphere.

Michael Park school tent. March 15, 1:00-7:00 pm.

Parent and child \$110. Extra child \$60.

Expressions of interest welcome at  
luisbernal@gmail.com.

# Lower School Kapa Haka

By Aria Berghan

Every Thursday Lunch

Eurythmy Room

Classes 1-5

Starts after the 2nd lunch bell

Come along and learn Māori waiata, dances and games. It is guaranteed fun for everyone.

See you there!



THE CHRISTIAN COMMUNITY  
THE MOVEMENT FOR RELIGIOUS RENEWAL

You are very welcome to our  
**FAMILY AND COMMUNITY SUNDAYS**

10.00 THE ACT OF CONSECRATION OF THE  
HUMAN BEING

Followed by morning tea

11.30 FAMILY AND COMMUNITY TIME  
with singing, story and the  
SUNDAY SERVICE FOR CHILDREN

Followed by lunch. Please bring food to share.

Dates for 2025:

March 9, April 13 (Palm Sunday), May 4,  
June 1, June 29 (Festival of St. John),  
July 6, August 3, September 7,  
October 5, November 2, December 7,  
December 28 (Christmas festival)

10 RAWHITI ROAD ONE TREE HILL 09 525 2305  
Hartmut Borries 021 259 8555 [hartmutborries@mailbox.org](mailto:hartmutborries@mailbox.org)  
Cheryl Prigg 021 023 20932 [cheryl.n.p@gmail.com](mailto:cheryl.n.p@gmail.com)