



COMING EVENTS

[Click here to view the full calendar online](#)

Tuesday 5 November Class 1 Parent Meeting, 7pm

Saturday 9 November **FAIR DAY**

Friday 15 November **MID TERM BREAK**

18-23 November **Class 8 Camp**

Wednesday 20 November **Kindergarten Open Afternoon**

Kia Kia kaha, kia māia, kia manawanui.

Be strong, be brave, be steadfast.

When I think of the term ahead, I think of camp. Mostly, because I have been invited to attend the Class 8 camp in November and partly because many of our class camps fall in this term.



Last week classes 6 and 9 were out on camp and have returned in high spirits. Later this term Class 5, 7 and 12 will also each go out on camps. As I write, Class 5 are on their way to an overnight tramp in the Kaimai ranges.

Going on camp can feel like a daunting experience for some, while for others it is an exciting step into something unknown. For both types of people, the above whakatauki holds true. No matter who you are, stepping out into the world requires a degree of inner strength and bravery to leave your comfort zone. And while you are 'out there', steadfastness is required to endure the challenges and adventures that await, and to fully immerse yourself in the experience.

The same whakatauki holds true for other life experiences, especially those that seem to change the 'world' as we know it.

As generally tends to happen in a school, Term 4 is a time when many things can change and questions begin to arise about staffing. Every year we are faced with the challenge of changes to our teaching staff or assessing how teachers are appointed to classes to best meet the needs of our ākonga.

It is with this in mind that we sadly announce that Sophie van der Have will be leaving Michael Park at the end of the year. Sophie is bravely stepping out to follow new pursuits outside the classroom which will benefit the wider Steiner community in Aotearoa and beyond, while also giving her and her husband, Jelle, the chance to be closer to family in Hawke's Bay.

We wish Sophie well in her new endeavours and trust that our

paths will cross again soon.

At present we also wish to announce that Marco Liguori will take over from Sophie as Class 6 kaiako next year, and that Janette Feenstra has expressed her wish to take her current class into Class 2.

We are currently in the process of recruiting a new class teacher for Class One 2025 and the vacancy in Class 3 will be advertised this week. We hope to be able to announce more details about the two new staff members, and all our kaiako for 2025, by the end of November.

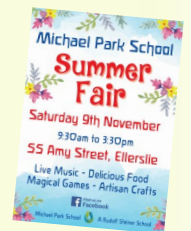
Until then - *Kia kaha, kia māia, kia manawanui!*

Arlene



FAIR UPDATE - 1 WEEK TO GO!

- Please make sure you have put your name on your class roster, we need all parents to help out - your class coordinators need your FULL support!
- Advertising - can you help deliver the fair flyers in your local area? Please collect flyers from reception and tell us which streets you can deliver to.
- Please share the [Face Book event](#)
- FLOWERS - If you have any flowers and any trailing greenery/vines, these would be greatly appreciated. These can be dropped to Kindy the morning of Friday the 8th of November – there will be buckets to put these in.
- Cake Stall – Cake boxes and instructions have now gone home with students. If you haven't received yours, please collect from reception. Each year every school family makes 2 cakes plus a third item (preserves, meringues, biscuits) for the cake stall.



Thank you all for all the hard work you have done in the lead up to the Fair. Please contact Erin if you require any further information. fairadmin@michaelpark.school.nz



Cake Stall



Every year, each family makes 2 cakes and 1 additional item (meringues, cookies, fudge, homegrown produce) for the cake stall at the fair.

Some classes have received their packaging supplies and the rest will be distributed next week.

TIPS –

- Bake ahead of time – choose items that can be frozen.
- Specialty cakes always sell well (Christmas cakes, gluten free, etc).
- Make your cakes look pretty! You could search online for inspiration.



BEST IN SHOW CAKE COMPETITION

Prizes are back, so get inspired and create your dream cake to win – best in show, most creative, etc.

**there is also a prize for cakes made by adults!*

Instructions for how to enter are included in your cake packaging kit.

Competition cakes will need to be delivered to school by 4pm Friday, as this is when they will be judged.

Happy Baking!!



The Snapdragon team would love to have donations of pre-loved Waldorf toys and dolls in good condition, which Snapdragon will sell at the fair.

These may be dropped off to the school office, where there is a collection box for your donations.

Thank you!

SNAPDRAGON AT THE FAIR

FIND US IN THE HALL & THE SHOP
CASH & EFTPOS AVAILABLE

BEAUTIFUL HANDMADE DOLLS, CRAFTS AND GIFTS
SEWING AND CRAFTING RESOURCES
SNAPDRAGON GIFT VOUCHERS NOW AVAILABLE



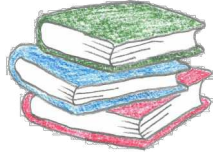
Attention

FLOWER
DONATION FOR
THE FAIRY QUEEN
KINDY FAIR
NEEDED!

Contact: Jessie H
0210609813

IMPORTANT DATES IN THE LIBRARY:

- **Book returns:** All books to be returned by **29 Nov** for stocktake (Class 11 and 12 - all *study guides* do not need to be returned until graduation day, **4 Dec**, and all other books to be returned by **29 Nov**).
- **Stocktake week:** we will have a one-week break from issuing **Mon 2 Dec – Fri 7 Dec**. Library lessons will still take place.
- **Summer issuing:** will begin from **9 Dec** – students, staff and parents will be able to stock up on books for their summer.



SPORTING SUCCESS



Last week, Misha Dergilev (Class 4) has claimed the title of New Zealand National Champion in bouldering, a sport climbing discipline, bringing the trophy home for the second year in a row. Competing at the La Sportiva National Youth and Masters Bouldering Championships organized by Climbing NZ, Misha represented the Auckland Sport Climbing Club and delivered an outstanding performance. Flashing every route in the finals - completing each on his first attempt - he secured first place in the Under-12 category.

This national event draws climbers from across the country, offering a unique opportunity to test their skills on routes set by International Federation of Sport Climbing-accredited setters. This year, the judging team was led by Nelson Lam, a New Zealander who served as a judge at the Paris Olympics!

Congratulations, Misha - keep up the fantastic work!

I competed in the Jiu-Jitsu Nationals last Saturday for the second time. After winning gold the year before was able to secure silver this time round. It was a day filled with excitement and anticipation, preparing by the side of the mat, watching the other competitors fight, and then waiting for your name to be called. - Leon, Class 12

Congratulations, Leon - that's awesome!



TE AO MĀORI

A space dedicated to promoting te reo me ōna tikanga Māori

RERENGA KŌRERO O TE RĀ

Whakamaua tō pōtae - *put on your hat.*

Whakamaua tō (*put on your - singular*) pōtae (*hat*),
tihate (*t shirt*)

Whakamaua ō (*put on your - plural*) hū (*shoe*), tōkena
(*socks*)

TE REO MĀORI CLUB

Te Reo Māori Club is on again this term – Wednesday lunchtime at the library.



PRE-LOVED SWIMWEAR

Classes 1 and 2 have been enjoying their daily visits to the Lagoon Pool and Leisure Centre this week for swimming lessons. Kaiako learned from staff at the centre that they are greatly in need of spare swimming gear. They see many other school children who cannot partake in lessons with their school, as they do not own a swimming costume.



If you have any togs that your child has outgrown, we'd be glad to have them dropped off at the school office, to be donated to the Lagoon Pool and Leisure Centre.

COMMUNITY NOTICEBOARD

- **Rooms to rent** - 2 bedrooms in a 3 bedroom villa at 34 Amy Street available at a reasonable rent. \$350 + share of utilities. Contact David Legg 022 468 1904.
- **Experienced, responsible babysitter** looking for work on evenings and weekends, close to Ellerslie. References available. Phone Rebecca Affleck Buxton 021 226 3718.

Contact the editor, Dana Marcroft at fridayflyer@michaelpark.school.nz
Guideline 150 characters maximum please. Deadline midday Thursday.

Graphic advertisements to be formatted to fit A6 portrait (¼ page).
Whole page ads are not accepted for non school-related activities. Ads may be published a maximum of twice per term, at the editor's discretion.

Cheesecake fundraiser Class 5



Please order online in November
with Auckland free delivery



+ New Mango Passion Flavour! \$75

Call or text us a message
+64 22 490 6014



@JJCHEESECAKE.NZ

15% will be donated to class 5.

Be sure to reference "Michael Park School"

*Please confirm if a gluten-free option is available when placing your order

All cheesecakes are made with the high quality
ingredients, fresh blueberries, selected pistachios.

Whole cheesecake is for 12 persons, ~1 kg, 24 cm.

No artificial flavours, colours or preservatives.

Order 1-2 days in advance.

Flute Lessons with Louise Inglis

Would you like Flute lessons with Louise Inglis at
Michael Park School?

Louise has over 20 years experience teaching the
flute and is a passionate and caring teacher. Louise
plans to return to Michael Park School to teach flute
from the start of 2025.

Qualifications: ATCL Flute (with Distinction), Bachelor
of Education (with Distinction).

For enquiries and to book a
space, please make contact with
Louise ASAP. Email is the best
way to make initial contact with
Louise:

louise@louiseinglis.com

You may like to look at her
website too:

www.louiseinglis.com



FARMING TODAY As a Living Ecosystem: A Journey into Biodynamics

With Diane de Saint Quentin, Peter Bacchus
Gill Bacchus, Monique Macfarlane, Dianna Brinsden

Spring
Sunday ~ 17th Nov 2024

The first of a series of one-day farm workshops

Join us for an introductory experiential workshop where we'll explore the farm
as a living ecosystem and introduce biodynamic principles as a path for self-
discovery and learning. This workshop includes:

- Biodynamic Practices: Learn some principles and techniques.
- Nutrition: Discover how biodynamic methods enhance food quality.
- Artistic Exploration: Engage in plant and animal observation.

Participate in a walk around the farm, gaining insights from experienced
practitioners. Connect with like-minded people passionate about sustainable
farming and gardening, and enjoy creative exploration through the arts.

Join us for a day of hands-on learning experiences and connection.

Date: 17th Nov 2024

Time: 9:30am - 5pm

Location: Mangatangi

(approx. 1hr Sth of Auckland. Carpooling from Rudolf Steiner House)

Cost: \$100 (If funds are limited please get in contact)

Please bring food to share for lunch. Walking shoes/gumboots, hat & water.

To register and for more info:

hello@diannabrinsden.co.nz

Limited spaces. Register by 14th Nov.

The Dhd Wala will be making delicious homemade dhd
with rice for \$5 a bowl. For a warm bowl of yummy,
please bring cash & your appetite this



Monday and Wednesday.

All ingredients are vegan, gluten &
dairy free & 100% fabulously made!

[Please fill out the contact form here](#) if
you'd like to pre-order for Monday or Wednesday.

SCAMPS

Supervised Care After Michael Park School

Let us do the after school care for your child.
Book now! One to four days per week.

Scamps is offered exclusively to MPS students only
and so far your kids are loving it!

MON - THURS 3pm - 5.30pm

Bookings and enquiries please contact
brian@clevernz.com