



COMING EVENTS

[Click here to view the full calendar online](#)

Sunday 27 October	Eurythmy Performance, 3.30
Monday 28 October	LABOUR DAY
Tuesday 29 October	Class 5 Parent Meeting, 6.30pm
Wednesday 30 October	Class 4 Parent Meeting, 7pm
Friday 1 November	Gumboot Friday
Tuesday 5 November	Class 1 Parent Meeting, 7pm <i>**Please note change of date</i>
Saturday 9 November	FAIR DAY
Friday 15 November	MID TERM BREAK

Kia ora whānau,

Kia u te manawanui o nga tamariki ki nga taumata tiketike o nga whetu.

With perseverance our children will reach the stars.



This week is the last week for Class 11 and 12 students being at school before they start their NCEA exams. I would like to take this opportunity to wish them all the best with their externals and we look forward to seeing them back at school for a few days at the start of December, when our attention will focus on our end of year high school events and our Class 12 graduation, which the whole school will celebrate.

Yesterday, I had the pleasure of watching our Class 5 perform their play, and it was amazing. Well done to all our students who performed, and thank you to Mrs Van der Have for holding it. Finally, thank you, Class 12, for redecorating my office this morning, and thank you for the alfresco breakfast. The cloned versions of the principal walking around the school today are better looking than the original version!

Have a wonderful long weekend.

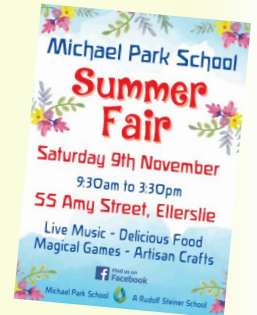
Ngā mihi nui,
Desmond
Pemerika
Tumuaki



SUMMER FAIR

FAIR 2024

- Advertising - can you help deliver the Fair flyers in your local area? Please collect flyers from reception and tell us which streets you can deliver to.
- The last day for dropping off pre loved clothing will be the 29th October.
- If you have any shopping bags we can use, please drop to reception
- Make sure you see the [Face Book event](#)
- Gazebos! Do you have one we can use on fair day?



Any questions, please contact
fairadmin@michaelpark.school.nz



Cake Stall



Every year, each family makes 2 cakes and 1 additional item (meringues, cookies, fudge, homegrown produce) for the cake stall at the fair.

Some classes have received their packaging supplies and the rest will be distributed next week.

TIPS –

- Bake ahead of time – choose items that can be frozen.
- Specialty cakes always sell well (Christmas cakes, gluten free, etc).
- Make your cakes look pretty! You could search online for inspiration.



BEST IN SHOW CAKE COMPETITION

Prizes are back, so get inspired and create your dream cake to win – best in show, most creative, etc.

**there is also a prize for cakes made by adults!*

Instructions for how to enter are included in your cake packaging kit.

Competition cakes will need to be delivered to school by 4pm Friday, as this is when they will be judged.

Happy Baking!!



CALLING ALL PERFORMERS

Dancers, musicians, etc, to perform at the fair. Please see Amanda Lawrence or email her on amandal@michaelpark.school.nz



Attention

FLOWER
DONATION FOR
THE FAIRY QUEEN
KINDY FAIR
NEEDED!

Contact: Jessie H
0210609813



The Dhal Wala will be making delicious homemade dhal with rice for \$5 a bowl. Due to the public holiday, the Dhal Wala will be offering lunch on

Tuesday and **Wednesday** next week.

He will return to Mondays and Wednesdays the following week, and for the rest of term.



All ingredients are vegan, gluten & dairy free & 100% fabulously made!

Please fill out the contact form [here](#) if you'd like to pre-order.

GOT YOUR HAT?

Remember, sunhats are required during terms 1 & 4 for break, lunch and outdoor lessons.



PĀNUI FROM THE WHARE PUKAPUKA

Summer reading

Last year we trialled issuing books over summer. It was a real success so we will be doing it again!

Watch this space for more information about the value of keeping up reading over summer, and opportunities to come and choose some books with your children.



IMPORTANT DATES IN THE LIBRARY:

- **Book returns:** All books to be returned by **29 Nov** for stocktake (Class 11 and 12 - all *study guides* to be returned by graduation day, **4 Dec**, to avoid charges, and all other books to be returned by **29 Nov**).
- **Stocktake:** we will have a one week break from issuing **Mon 2 Dec – Fri 7 Dec**. Library lessons will still take place.
- **Summer issuing:** will begin from **9 Dec** – students, staff and parents will be able to stock up on books for their summer.

Some Waldorf classics in our parents' collection

When my oldest daughter was young, I had a number of favourite books that I read over and over. One of them was *Lifeways* edited by Gudrun Davy, and the other was *Festivals, Family and Food* by Diana Carey and Judy Large. In celebration of those classics, I've made up a display of old favourites in the library this week:



TE AO MĀORI

A space dedicated to promoting te reo me ōna tikanga Māori

ĀERENGA KŌRERO O TE RĀ

Haere mai ki te kai! Come and eat!

A KARAKIA FOR KAI

Whakapainga ēnei kai	Bless these foods
Hei oranga mō te tinana	for the health of our bodies
mō ō mātou wairua	and our spirits
hoki.	as well.
Āmine.	Amen.

TE REO MĀORI CLUB

Te Reo Māori Club is on again this term – Wednesday lunchtime at the library.

COMMUNITY NOTICEBOARD

- **Experienced, responsible babysitter** looking for work on evenings and weekends, close to Ellerslie. References available. Phone Rebecca Affleck Buxton 021 226 3718.
- **Holiday House, Waimarama, Hawkes Bay.** Available December, January and February. Escape to a charming, hand-built strawbale house with recycled, shabby chic décor. Nestled in a 9-hectare, spray-free, regenerating wilderness garden with abundant wildlife, this peaceful retreat offers off-grid (solar) living with wonderful views of the ocean and hills. Spacious open-plan living area and large sunny verandas. 3 double bedrooms plus a sunroom on the veranda (sleeps 8). 1 large bathroom. Eco friendly. Just 20 minutes from Havelock North and 10 minutes to nearby beaches, rivers, and bush reserves. Rates: \$325 per night, 3-night minimum. Call 027 2633 735 for information and bookings.

Contact the editor, Dana Marcroft at fridayflyer@michaelpark.school.nz

Guideline 150 characters maximum please. Deadline midday Thursday.

Graphic advertisements to be formatted to fit A6 portrait (¾ page).

Whole page ads are not accepted for non school-related activities. Ads may be published a maximum of twice per term, at the editor's discretion.

SCAMPS

Supervised Care After Michael Park School

Let us do the after school care for your child.
Book now! One to four days per week.

Scamps is offered exclusively to MPS students only
and so far your kids are loving it!

MON - THURS 3pm - 5.30pm

Bookings and enquiries please contact
brian@clevernz.com

Flute Lessons with Louise Inglis

Would you like Flute lessons with Louise Inglis at Michael Park School?

Louise has over 20 years experience teaching the flute and is a passionate and caring teacher. Louise plans to return to Michael Park School to teach flute from the start of 2025.

Qualifications: ATCL Flute (with Distinction), Bachelor of Education (with Distinction).

For enquiries and to book a space, please make contact with Louise ASAP. Email is the best way to make initial contact with Louise:

louise@louiseinglis.com

You may like to look at her website too:

www.louiseinglis.com



BE WHAT YOU ARE – GIVE WHAT YOU HAVE

A homage to the human rights



EURYTHMY **CORNELIA KLOSE**

SPEECH **ELIEN HOFFMANS**

PIANO **INGRID PALMER**

VIOLIN **MIRU SHIMAOKA**

DIRECTING / COACHING **CHRISTIANE GÖRNER**

Ausländer · Friebe · Cadenas · Jimiénez · Barkauskas · Chopin · Richter · Say

A dialogue between eurythmy, poetry and music that moves the heart and mind.

MICHAEL PARK SCHOOL · Ellerslie AUCKLAND · SUNDAY 27th of OCTOBER 3.30 pm · Tickets \$20 · school- students \$10

JOIN IN THE FUN WITH CLASS 1

BOULDER CO.
CLIMBING + FITNESS

FUNDRAISER

9am Sunday 27 October

BOULDER Co. 33-47 Northside Drive, Westgate

\$24 per person climbing*

Register your interest using the following link:

<https://bit.ly/Class1Fundraiser>

*Price includes shoe hire www.boulderco.co.nz

Thanks to Boulder-Co. for donating MPS child entry fees to Class 1

Cheesecake fundraiser Class 5



Please order online in October,
with Auckland free delivery



Call or text us a message
+64 22 490 6014



@JJCHEESECAKE.NZ

15% will be donated to class 5.
Be sure to reference "Michael Park School"

All cheesecakes are made with the high quality ingredients, fresh blueberries, selected pistachios. Whole cheesecake is for 12 persons, ~1 kg, 24 cm. No artificial flavours, colours or preservatives. Order 1-2 days in advance.

Post Graduate in Artistic Therapy 2025



This is a unique opportunity to study in depth the Hauschka approach to Anthroposophical Artistic therapy deepened by the work of Eva Mees-Christeller who was the (director of de Wervel in Holland). You will learn from Artist, Artistic Therapist, Teacher Margaret-Mary Farr who studied directly with Eva Mees-Christeller and has over 38 years of experience in private practice.

This programme will run over three and a half years, and will consist of 9 intensive 5-day seminars at the Kairos Studio, six, 4 hour zoom courses and an additional 15-20 hours per week study and artistic practice from home for the duration of the course.

The Post Graduate Diploma will give you a good foundation to work practically with the therapy tools in your sphere of work, or just to be inspired to create. Anyone with artistic with experience who has an understanding of the Anthroposophical world view, and an interest in Artistic Therapy will be considered. This course will be based in Hastings, Hawkes Bay, New Zealand. This course is run by Margaret-Mary Farr founding director for Kairos Anthroposophical Artistic Therapy Training, with a small group of experienced and knowledgeable guest tutors. Below are dates for first 3 seminars.

When	31 March	4 April	2025
	16 June	20 June	2025
	8 September	12 September	2025

Where: Kairos Centre, 100 Eastbourne Street East, Hastings
Tutors: Margaret-Mary Farr, Eric De Vries, Dr. Rob Maunsell, Dr. Richard Drexel

Fee: 4,500.00 per year

Crystal Bridge Small Loan Fund. Email: manawastudio@gmail.com

For further information contact: Margaret-Mary on (027) 248-4193 or

Email: manawastudio@gmail.com

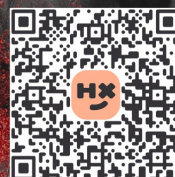
27th of October

HALLOWEEN ECSTATIC DANCE

FAMILY FRIENDLY

COME AND JOIN THE FUN!
4-6PM

THE BUTTON FACTORY
AUCKLAND CBD



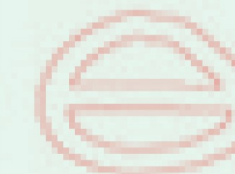
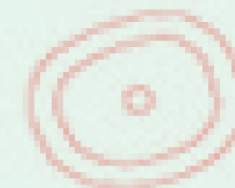
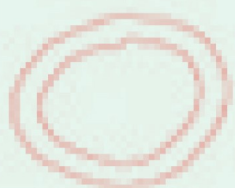
Contact
Jessie
+64 21 060 9813
jessieholtschke@gmail.com



DJ MORPHO

Artisan Pathways

Outdoor Classroom - Experiential Learning Teacher and Practitioner Online Training Course 2025



Course Structure

- 7-week Online (Zoom) tutorial sessions
Wednesday evenings (7.30 - 9.30) 19 February to 2 April \$450
- Craft Immersion Camp (Auckland): 13 to 17 April \$550
- Highly recommended:
One-day Supplementary Craft Workshops announced throughout the year, including their theme, location, and price.

Course Content and Skills

You will develop:

- Localisation of curriculum strategies
- Integration of outdoor and indoor learning
- Links with the environment as an agent in learning and teaching
- An understanding of the learning journey using traditional crafts
- Deep cultural sensitivity and appropriateness
- Reflective practice
- An understanding of whole person intelligence and how the literacies of making and growing support balanced human development
- Health and safety and risk benefit analysis practices
- Earth, Water, Fire and Air themed activities

John Lawry

Educator, B.Ed, Master Craftsman

Born 31.5.1950, in Auckland, New Zealand, a fifth generation South Pacific Celt, my life experience as an artisan & educator spans more than five decades.

In 2010, a confluence of my life-long interest and immersion in craft and education occurred when, inspired by Bernard Graves, I began establishing and developing the Outdoor Classroom at Michael Park Steiner School. This included site surveys, comprehensive curriculum gardens, a lower-school craft/experiential skills-based curriculum, its integration into H/S Technology, an intensive Masterclass Craft program and camps.

Word spread: tasks multiplied; O.C. teacher training courses, consulting, presenting workshops and papers and organizing conferences ensued. I "retired" from full-time teaching at the end of 2016 and established "Artisan Pathways" to run masterclass workshops, craft immersion camps, travel and consult in New Zealand, Australia and Southeast Asia and to craft and garden more.

To enrol or request further information
Follow us on [Facebook](#)

Email: lawry.john@gmail.com
Phone: 021 125 7817