



COMING EVENTS

[Click here to view the full calendar online](#)

TONIGHT	Music & Dance Concert
Saturday 14 September	E-waste drop off day
Saturday 14 September	Garden working bee
14-21 September	Te Wiki o te Reo Māori
Tuesday 17 September	Class 11 Parent Meeting 6.30
Tuesday 17 September	Class 12 Parent Meeting 6.30
Weds 18 September	C11 Fundraiser - Forensic Science Talk, 7pm, Auditorium
18-20 September	Whole School Arts & Crafts Exhibition
Friday 20 September	Cultural Festival 1.10pm
Sunday 22 September	Class 5 Movie Fundraiser
POSTPONED	Refunds will be given to those who already purchased tickets

Ka pū te ruha, ka hao te rangatahi - When the old net is moved aside, the new net goes fishing.

Teupiri mai anoo e te Kūiini hou ki too iwi.

Te Arikiniui Kuini Nga wai hono i te po.

He Piko, He Taniwha, He Piko, He Taniwha.

Waikato Taniwharau.

Paimaare

Kia ora whānau,

What a wonderful gift we witnessed this week where 35 of our music students from class 1 to class 12 attended a workshop with the visiting orchestra students from Melbourne's Little Yarra School. We were then treated to a concert after lunch to watch the collaborative pieces that our students had been working on, followed afterwards with Little Yarra's concert performance to the school and whānau. It was a wonderful opportunity for our students, something that they will remember for a long time.

The week before last, we also hosted another Waldorf school from Shanghai where 11 staff and 16 students from class 5 to class 8 visited our kura. Their principal, Yiqing Zhang, who was part of the group, sent an email the other day and I would like to share some of what he says:

*"Dear Desmond,
Thank you so much for the welcoming, we had a really rich and*



fruitful experience at Michael Park! We love your school, the people and the atmosphere, thank you a lot to the teachers and students, and beautiful Chinese song performance. That was unbelievable!

Thanks a lot the open heart of your school, we were all delighted by the passion and warmth of everyone, our hearts were full from it " (The Chinese song was performed by Class 1).

By the time you have read this, 36 students from classes 10, 11 & 12 and 2 teachers will no doubt be sound asleep after the epic 24-hour Art-a-Thon that started 11am yesterday and finished 11am this morning. Before they went home for a well-earned rest, there was a high school assembly where they showcased the pieces that were produced during that time. Final pieces will be shown as part of our kura and kindergarten art exhibition next week.

Finally, it is with sadness to let you know that I reluctantly accepted Eileen Boland's resignation earlier in the week. Eileen has been part of our kura since 2011. During that time Eileen has been our lower school eurythmy teacher before transitioning into her role as our curative eurythmist, where she has supported and helped a large number of our tamariki in the kindergarten and lower school. We are going to miss Eileen and we can't thank her enough for the purposeful mahi that she has done for our tamariki.

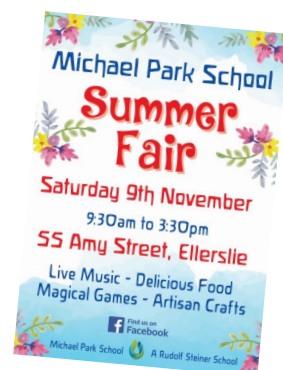
I am looking forward to attending our own music performance tonight. A wonderful way to finish off the week and start the weekend.

Mauri tu, mauri ora,
Desmond Pemerika
Tumuaki

ADVERTISING OUR FAIR

Can you help deliver the Fair flyers in your local area? Please collect flyers from reception and tell us which streets you can deliver to.

Any questions, please contact
fairadmin@michaelpark.school.nz



BICYCLES AND WHEELS

A reminder that the riding of bicycles, scooters, rollerblades and skateboards is prohibited in the school grounds during school hours and at drop-off and pickup time, i.e., between 8am and 3.30pm. This includes school events outside of normal hours. Bicycles are to be kept on the bike racks.

A vibrant poster for a Music & Dance Concert. It features a guitar on the left, a drum set at the top, and a trumpet on the right. The text is centered and reads: "MPS Students Present: MUSIC & DANCE CONCERT TONIGHT! FRIDAY 13th September Venue: MPS Auditorium Time: 7pm Entry Fee: Adult \$10 Child \$5 Family 4+ \$25 COME AND ENJOY!".

MPS Students Present:

MUSIC & DANCE CONCERT

TONIGHT! FRIDAY
13th September

Venue: MPS Auditorium
Time: 7pm

Entry Fee:
Adult \$10 Child \$5
Family 4+ \$25

COME AND ENJOY!

CLASS 12 INDEPENDENT PROJECTS

Class 12 warmly invite the Michael Park community to the presentation evening of their Independent Projects. The evening will be a showcase of the magnificent and imaginative journeys of our talented students.

Event Details:

- **Dates:** Tuesday, 24th and Wednesday, 25th September
- **Time:** Presentations to start at 6:00 PM
- **Location:** Auditorium

The Auditorium foyer will be open from 5:30 PM to view the students' displays and to enjoy some light refreshments (fundraising event for the Class 12 Camp) as you explore their innovative projects. The evening will highlight a range of exciting and diverse independent projects, reflecting the dedication and ingenuity of our Class 12 students.

Please help us celebrate our students' achievements.

The Dhal Wala will be making delicious homemade dhal with rice for \$5 a bowl. For a warm bowl of yummy, please bring cash & your appetite this **Monday and Wednesday**.



All ingredients are vegan, gluten & dairy free & 100% fabulously made!

Please fill out the contact form here if you'd like to pre-order for Monday or Wednesday.

MPS SPRING FESTIVAL

Join us for a vibrant celebration of the season as we welcome Spring together! MPS will come alive with joyful songs, engaging games, and a delightful picnic.

This community event is a wonderful opportunity to foster a sense of belonging and celebrate the joy of the change of seasons.

Pack a picnic and join us on **Thursday, 26th September at 12.20 pm.**

Hypoallergenic face painting is available. Please advise your child as to what you want for them and this activity.

OUR SCHOOL GARDENS

Organised by the Parent Action Group

If you would like to lend a hand, please join us with your gardening gloves every 2nd Saturday of the month to make our school's veg gardens look great!

Saturday 14th of September

(weather permitting)

10am-12pm

Drop in any time!

For more questions txt

Nina on 021 208 6206



Whiria te Tāngata

Weave the people together

From 16th to 20th September
Michael Park School weaves together
its community in a combined
celebration of te Reo Māori language,
the Visual Arts, Crafts and Culture.



Michael Park School
Relate Create Inspire

14th — 21st Hēpetema

Te Wiki o te Reo Māori
Celebrating Māori
Language Week

18th — 20th September

**Whole School Art
& Craft Exhibition**
All day in the Eurythmy
room & Auditorium

20th September 1:10pm

Culture Festival Concert
Auditorium
Students in national dress
Cultural food lunch bar



'RAISING RESILIENT KIDS' WORKSHOP

Thank you to all those who attended the parenting talk by Adrienne Wood on Tuesday night. We raised \$1500 which will go towards the new playground. Thank you for spreading the word and inviting other friends to come along too. There was great energy and connection, and we've had lots of good feedback about how helpful the content was so this is really positive.

If you weren't able to attend, or you're interested in learning more, the Neufeld Institute website is full of great resources and courses. Follow this link for some excellent free resources.

<https://neufeldinstitute.org/resources/free/>



FRIDAY, 20TH SEPTEMBER

MPS kindly invites you to celebrate our cultural diversity with a concert in the auditorium. The concert will feature songs sung in different languages from around the world.

Whānau are very welcome to attend. The concert begins at 1.10pm*, and we ask that you please be seated in the auditorium by 1pm.

**Please note this is an earlier start time than what was previously advertised on the Whiria te Tāngata poster.*

Lower/middle school will finish a little later (at 2.30pm) on the day. We kindly invite children (and parents attending) to wear their national costumes.

We're again running an international lunch bar to celebrate foods from all the cultures represented at our school, all proceeds of which go to our sponsored student in the Himalayas. We welcome all donations of *pre-portioned finger food* that can be easily served on napkins. Please, drop this off early in the morning.

Thank you for your support in celebrating cultural diversity in our community.

Kind regards,
Lower School Teachers

Fairy Festival & Pirate Party

A big thanks to the Parent Action Group for representing MPS at the Ellerslie Fairy Festival and Pirate Party!

It was great to have such a strong presence in our local community, and to get interest in our school and the upcoming fair. Our popular stall filled with handmade Snapdragon type crafts gave both adults and children a magical shopping experience and a small taste of our unique and amazing school.

Also a big thank you to Isla (Class 5) and Matilda (Class 1) for a stunning performance in the festival parade, and to the MPS community who popped by the stall to say hello!



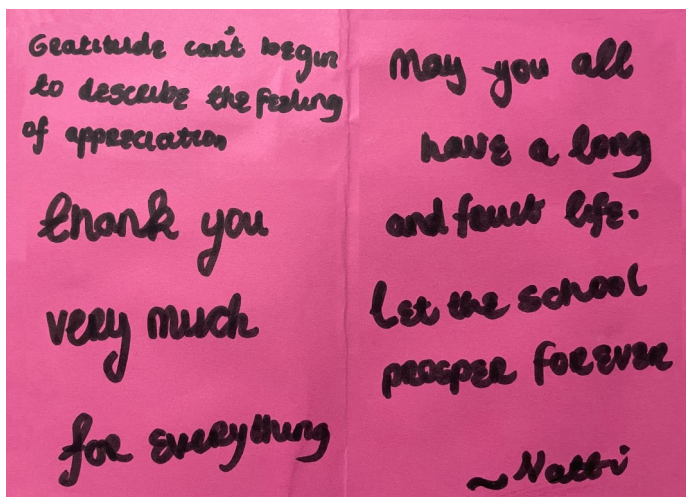
REFUGEE STUDENTS VISIT MPS

A few weeks ago, Michael Park had the pleasure of welcoming secondary students from the Mangere Refugee Resettlement Centre. We had the opportunity of meeting students from countries like South Africa, Afghanistan and Colombia where we were able to absorb the essence of their rich culture and language.

We started the day with a warm welcome and introductory session of ice-breaker games to get to know each other, before splitting off in groups. Workshops were organized consisting of ceramics and felting, and, for some of the students, it was their first time ever using these materials. *"I really enjoyed my day. It was a once in a lifetime opportunity, being able to work with clay"* - Anonymous.

The day finished off with a friendly sports competition with class 9. As a school, we were happy to provide our guests with their first school experience in NZ. We made many new friendships, and the day was full of learning, understanding and growth for everyone involved.

- Sienna and Karla, Class 12



TE AO MĀORI

A space dedicated to promoting te reo me ōna tikanga Māori

Te Wiki o te Reo Māori Te Reo Club special event

All students, staff and whānau are invited to join our Te Reo Club for a kēmu of te reo bingo and a shared kai to celebrate Te Wiki o te Reo Māori.

Wenerei 18 Hepetema

12.40pm start at the whare pukapuka

Please bring a plate of kai to share and sign in at the office on your way up to the library.

Dates in Te Reo Māori

Ko (day) te (number) o (month)

Days of the Week in Te Reo Māori

Mane	Monday
Tūrei	Tuesday
Wenerei	Wednesday
Tāite	Thursday
Paraire	Friday
Hatarei	Saturday
Hanarei	Sunday

Ngā kare ā-roto me ngā āhua Feelings and states

Kei te pehea koe?	Kei te au.
Pōuri	sad
Harikoa	happy
Ora	well
Ongeonge	lonely
Hiamo	excited
Pāmamae	upset
Pukuriri	angry
Āwangawanga	anxious
Ruhi	exhausted
Ohorere	surprised
Mataku	scared
Hōhā	fed up
Rangirua	confused
Whakamā	embarrassed
Manamanahau	joyful
Konekone	shy
Hiakai	hungry
Wera	hot
Makariri	cold
Hiawai	thirsty
Māuiui	sick
Hiamoe	sleepy



Middle School Sports Tournament

Huge thanks to Mr. Overton and to the Level 2 P.E. students for organising the Middle School Sports Tournament last Friday.

- 1st **Magnolia**
- 2nd **Kowhai**
- 3rd **Jacaranda**
- 4th **Maple**



Thank you so much, everyone, for voting for Murphy. Our favourite class dog got 2nd place in the People's Choice Award - 2nd place out of nearly 400! Everybody was so pleased. We can't believe how many people spread the word and how many people voted. We are all very thankful for everybody who supported Murphy. - Class 5





IN MEMORY OF LYNDLE MCILVEEN

1955 - 2024

I first met Lyndle through the North Shore Steiner Kindergarten initiative in late 1992, when she welcomed a group of mums and children into her home for a playgroup.

Lyndle has been part of Michael Park School since her childhood. Lyndle's mother was an anthroposophist, and her family were part of the pioneering group who founded MPS. As a teenager, Lyndle was kept busy creating signage for school fairs and any fundraising activities.

Lyndle's three boys were students at MPS. For years Lyndle served as class parent, organising phone trees, class camps, trips and fundraising and working on High School plays. Lyndle built many games for the school Fair, created the clucky hen, knights challenge and others.

Whenever I've visited MPS, I've seen the subtle signs of gifts in the beauty of the gardens she established.

Lyndle lived a life overflowing with generosity in so many ways - a true life of service for family, friends and the MPS community.

Lyndle gave most of her life's purpose to Michael Park School, always with a heartseed of anthroposophy at the core of all she offered and the nurturing of the children her main purpose.

Fiona Hailstone
Past MPS Parent

I first met Lyndle when I came to work at MPS in 2008; she was mowing lawns and then moved on to gardening in the school.

Her landscaping skills and knowledge of Biodynamics amazed me. Lyndle loved teaching Biodynamics (a system of horticulture involving an holistic approach to organic gardening) to the children at MPS. Lyndle managed the curriculum gardens along with the help of students. She grew lettuces for the Fair Vege Café, which saved the school a lot of money. Lyndle spent hours planning and illustrating/designing the gardens around the school. The areas that she designed were Treeland (outside the biology room), trees for

survival (between the eurythmy room and handwork room), the garden outside the tech block and IT room, and many other areas in the school. Her work ethic and strength were evident when she built a bridge in Treeland, spending many hours with the children moving huge rocks from the sports field to Treeland. She also spent a lot of time investigating which trees and plants would be suitable for different areas of the school. Lyndle developed the school gardens so that they could be low maintenance.

She was also a gifted artist and was responsible for the beautiful portrait of Hannelore Henning that graces the library. Lyndle's garden designs could have been framed, they were so good.

I will miss Lyndle very much; she was a very humble person and was always available to help me in the school.

Chris Farley
MPS Caretaker



TERM 1, 2025

Monday, 3 February - Friday, 11 April 2025

(Last day for students is Wednesday, 9 April)

Waitangi Day - Tuesday, 6 February

Teacher Only Day - Thursday, 10 April

Teacher Only Day - Friday, 11 April

*** Easter is during school holidays - Friday, 18 April,*

*Monday, 21 April, Tuesday, 22 April ***

*** ANZAC Day is during school holidays - Thurs 25th April ***

TERM 2, 2025

Monday, 28 April - Friday, 27 June 2025

King's Birthday - Monday, 2 June

Matariki - Friday, 20 June

TERM 3, 2025

Monday, 14 July - Friday, 19 September 2025

Teacher Only Day (Lower School Parent/Teacher
Conferences) - Tuesday, 22 July

Mid-Term Break - Date TBC

TERM 4, 2025

Monday, 6 October - Wednesday, 17 December 2025

Labour Day - Monday, 27 October

Fair - Saturday 8 November

Mid-Term Break - Friday, 14 November

SCAMPS

Supervised Care After Michael Park School

Let us do the after school care for your child.
Book now! One to four days per week.

Scamps is offered exclusively to MPS students only
and so far your kids are loving it!

MON - THURS 3pm - 5.30pm

Bookings and enquiries please contact
brian@clevernz.com

RSST PRESENTS...

PARENT EDUCATION PROGRAMME

Bringing together whānau & community to experience Steiner Education.

BLACKSMITHING with Luís Bernal

SATURDAY, 19th OCTOBER 2024

9am-4pm

Forging mild steel to make a fire poker,
hook, utensil or similar.

Venue: Metalwork Room, Michael Park School

Cost: \$50.00 Bring your lunch

RSVP: To register for our parent workshops,
please email Dana in the school office:

danam@michaelpark.school.nz

CLASS 10 RELEASE CHARITY SINGLE!

WRITTEN, PERFORMED AND RECORDED BY
CLASS 10

ALL PROCEEDS DONATED TO
REFUGEES AS SURVIVORS

INCLUDES PERFORMANCES BY VERY SPECIAL GUESTS!

SUPPORT THE
CAUSE!

FOLLOW US ON
INSTAGRAM AND
FACEBOOK

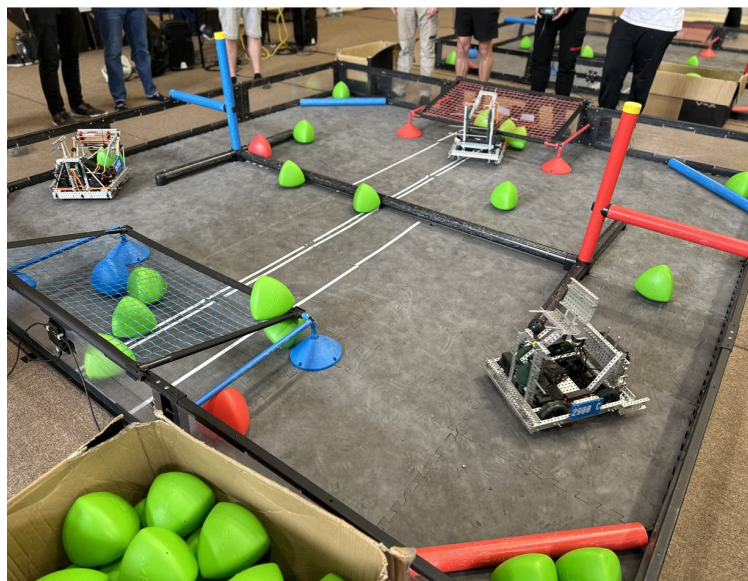
@hope4refugeesmps



Hope
4
Refugees

<https://www.facebook.com/hope4refugeesmps/>

VEX
ROBOTICS



Sat 21st Sept

Come see the Michael Park School robotics team in action and find out more about the IQ and VEX school robotics groups.

Location: MPS School Gym. 10am – 3pm.

Scratching the Surface of CSI

Universal messages and crazy stories from
the front-line of Crime Scene
Investigation

(minimum age requirement of 16 years, due to content)

CRIME SCENE - DO NOT CROSS CRIME SCENE - DO NOT CROSS

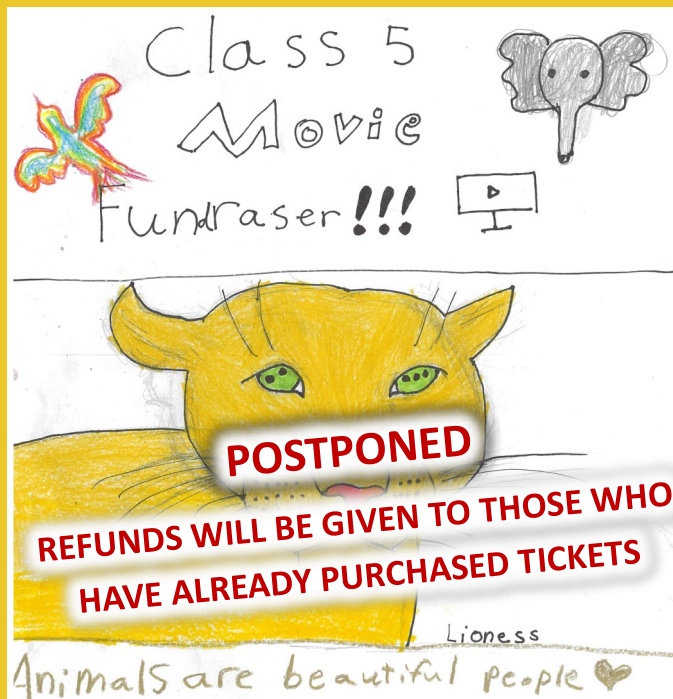
Ruben Miller
Forensic Scientist

Wednesday 18th September 7pm
Michael Park School Auditorium, 55 Amy Street, Ellerslie, Auckland

\$10 per person
purchase on-line www.iticket.co.nz *service fees apply
or door sales

A fundraiser for MPS Class 11

ITICKET



Movie - Animals Are Beautiful People

22nd September, 1pm, MPS Auditorium

Tickets cost \$8/person.

Kinga Csizmadia 03 0156 0860541 00 Reference - your name

We will have snacks and drinks for cash sale.

Suitable for younger siblings Prize for best costume

kinga0112@gmail.com if you have questions.

ELECTRONIC WASTE DROP OFF DAY



14th September 2024
SATURDAY 9AM - 3PM

Michael Park School
55 Amy Street, Ellerslie

Drop off your unwanted electronic products &
unwanted tech at this drive-thru event!
Staff will unload everything for your convenience.

IMPORTANT: Dropping off e-waste is allowed only on the event day. you
cannot drop off e-waste prior to, or after, the event day at this site.

We are proud to be accepting
donations for Variety - The
Children's Charity.



FREE OF CHARGE FOR DISPOSAL:

Computer & Laptops, Tablets & Small Devices, Mobile Phones, Wiring &
Cabling, Power boards & Multiplugs, Servers & Switches, Routers &
Modems, HDDS & USB Drives, UPS Batteries, Lead Acid & Car Batteries.

CHARGED ITEMS:

(Please check our website for more information)

\$1-2 each Fluorescent Compact Light Bulbs and Tube Bulbs
\$3 each Toner Cartridges, Keyboards, IP & Landline Phones
\$5 each Small Home Appliances e.g. Microwaves, Vacuums, Kettles
AV Equipment & Stereos, Digital Cameras, Oil Heaters
\$5.00 kg Household Batteries, Mixed Batteries, Lithium Batteries
\$10.00 each Small Inkjet & Laser Printers, Scanners & Fax Machines
\$20.00 each LCD & Plasma TVs, Ovens, Washing Machine & Dryers,
Dishwashers and Large Whiteware
\$30.00 each Medium Photocopiers & Printers
\$40.00 each CRT TVs & CRT Monitors, Fridges & Freezers, Heatpumps
\$60.00 each Large Photocopiers

Please note the charges above are for sharing the recycling costs.
Eftpos and cash accepted on-site.

ITEMS NOT ACCEPTED:

CDs & DVDs, Floppy Discs, LED & Household Lightbulbs, LPG Gas Bottles, Other
hazardous waste e.g. paint, garden waste or general chemicals, furniture e.g. TV
cabinets, medical devices or glass.

VISIT OUR WEBSITE TO LEARN MORE!

www.echotech.co.nz

0800 EWASTE

You can book an e-waste disposal pick-up at a
time that is convenient to you. Help us keep New
Zealand clean!



Michael Park School
55 Amy Street, Ellerslie

- Coordinator x 1 (James)
- Staff x 3
- Truck Driver x 1
- Echo Truck x 1
- Echo Van & Trailer
- E-waste Bins
- Metal Bin
- Sandwich Sign x 3
- Teardrop Flag x 2
- Road Cones x 20
- First Aid Kit x 1

Shaping Life Together

WALDORF EDUCATION
TODAY

Join a talk with international speaker **Florian Osswald**

The Significance of Steiner/Waldorf Education in an AI World

**SATURDAY 14TH SEPT 2024
3PM - 4PM**



Hosted by
Rudolf Steiner House

Michael Park School
55 Amy Street, Ellerslie, Auckland
Suggested Donation: \$10-20
Adults only

Followed by refreshments

FOR MORE INFO:
michellem@michaelpark.school.nz
hello@diannabrinsden.co.nz

Artificial Intelligence (AI) is rapidly transforming our world, presenting both opportunities and challenges. It is essential to approach AI with conscious awareness to create a future where AI serves humanity, enriching our lives while preserving the essence of what makes us truly human. Steiner/Waldorf education stands out as a beacon of creativity, critical thinking, and human connection. Our unique approach nurtures children's imagination, cultural competency, and original thinking, preparing them to thrive in an AI world.

ABOUT

Florian Osswald will be visiting Aotearoa New Zealand as an educational consultant working with Titirangi Rudolf Steiner School. Born in Basel, Switzerland, He worked as a curative teacher in the Camphill movement and then spent 24 years teaching mathematics and physics at the Rudolf Steiner School in Bern. From 2011-2021 he co-led the Pedagogical Section at the Goetheanum, contributing significantly to the development of Waldorf education worldwide.

Shaping Life Together

INSPIRING PEOPLE
TODAY

Join us for a talk with **Sam Gibson** author and wildlife enthusiast on his recent book:

Sam the Trap Man: Cracking yarns and tall tales from the bush

**18TH SEPT 2024
4PM**



Rudolf Steiner House

104 Michaels Avenue, Ellerslie, Auckland
Suggested donation: \$10-20

Followed by shared kai in the spirit of Kotahitanga

FOR MORE INFO:
samthetrapman@gmail.com
hello@diannabrinsden.co.nz

Sam Gibson, better known as 'Sam the Trap Man', is a Tairāwhiti-based trapper, conservation worker, and bushman. His life has been deeply intertwined with the wilderness, where he hunts, traps, and fishes. With followers across various social media platforms, Sam educates people about the importance of trapping pests and predators to safeguard native wildlife. His adventures take him into the heart of Aotearoa New Zealand's bush, where he gets up close and personal with ecosystems. In 2019, he established the Eastern Whio Link to protect the threatened native blue duck, the Whio. His book delves into his experiences, from working for the Department of Conservation in Te Urewera and Fiordland to his return home to Tairāwhiti. The book not only shares humorous stories but also emphasises the cultural and ecological significance of the bush. Sam's life story exemplifies resilience, passion, and a profound connection to the natural world. Protecting these ecosystems is his life's calling, and he lives by the motto that when the bush thrives, people thrive.

Shaping Life Together

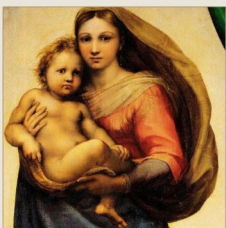
MOTHERING TODAY

Join the Steiner monthly mothers gathering!

He taonga te mokopuna, kia whāngaia, kia tipu, kia rea

A child is a treasure, to be nurtured, to grow, to flourish

**SUNDAY 22ND SEPT 2024
9:30AM - 12PM**

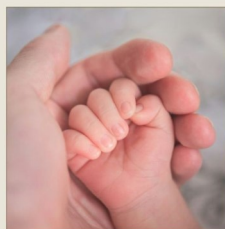


Rudolf Steiner House

104 Michaels Avenue, Ellerslie, Auckland

Donation \$10-20

FOR MORE INFO:
hello@diannabrinsden.co.nz
michellem@michaelpark.school.nz



Healing Stories & Craft

A time for mothers to share experiences, and explore the special task of the mother.

With Waldorf inspired knowledge and skills to provide a safe and nurturing environment.

We will explore the healing powers of therapeutic stories and how they can support children in addressing emotional and behavioural challenges through imaginative and relatable narratives. With guest speaker Sally Russell

Hosted by early childhood educators.

**STACEY MCMANUS
& MICHELLE MULLANY**



October Craft Holiday Program with Michelle Mullany

**Wednesday 2nd, Thursday 3rd October
Wednesday 9th, Thursday 10th October
9am-3pm
MPS Kitchen**

**Class 1-5 Tamariki (Ages 6-11)
Crafts galore and cooking/baking!**

**\$80 for 1x day
\$75 per day for 2, 3 or 4 days**

**Limited spaces available.
Book now to secure your space.**

**michellemullany@gmail.com
022 127 6551**

Horse Holiday Programme

Children
5-14 years

A day filled
with
everything
horse!

Mon
Sept
30 th
9am-2.30pm

Totara Park Equestrian
Centre
251 Redoubt Rd, Manukau
totaraparkpc@yahoo.com

Naturopathic consultations available
on Mondays & Thursdays via the
PAUA clinic in Ellerslie, Auckland.

I am Charlotte, a student naturopath in my final
clinical year of my degree at South Pacific College of
Natural Medicine.

This is an opportunity to see me in the student clinic at a heavily discounted
price. I have a special interest in digestive concerns, depleted immune systems,
skin & hormonal health, along with the nervous system; supporting stress
resilience, poor sleep, anxiety & low mood - though my skillset is not limited to
this.

CONSULTATION PROCESS

Initial consultation 90min: Comprehensive analysis of your current health &
symptoms, diet & lifestyle, health history, and any relevant blood work.

Health plan presentation 30-60min: Individualised treatment plan specific to
your health needs and wellness goals.

Follow-ups 30-60min: Regular check-ins every two to four weeks, depending
on your specific needs, to monitor progress and adjust treatment if necessary.



INVESTMENT

- Initial consultation waged: \$50
- Initial consultation children (6-18 years),
unwaged, community service card holders &
students: \$20
- Follow-ups: \$20
- Children under 6 & seniors over 65 years: Free

CONTACT

Instagram: [@body in essence](#)

E: charlotte.rudd@spcnmstudent.ac.nz

HOUSE FOR SALE

CV\$1,600,000



40A BALLARAT STREET, ELLERSLIE



PROPERTY FEATURES:



5 Bedroom



2 Bathroom



inc separate 1 bed
unit (rental income
\$375/w)



140m2



10 minutes from
MPS

ABOUT:

10 minutes walk to Michael Park School.
Family home, 4 bedrooms, 1 office, large
open plan living area with outdoor
entertaining area. Separate 1 bed unit
currently rented for \$375/w.
Established fruit trees, lawn, spa pool,
large garden shed, workshop, 2 off
street parks. Auction 25th September

Trademe listing #4896817758

Wendy Sadd (021) 607366

BARFOOT & THOMPSON
SEASON OF

Matilda

THE MUSICAL

BOOK DENNIS KELLY MUSIC & LYRICS TIM MINCHIN

BRUCE MASON CENTRE
25 September - 13 October 2024

BOOK NOW! [ticketmaster.co.nz](https://www.ticketmaster.co.nz)

ON SALE
NOW!

Matilda

Featuring our very own
KAHANU
from Class 7 at MPS

I'M PLAYING
TOMMY

BRUCE MASON CENTRE,
TAKAPUNA, AUCKLAND
25 Sept - 13 Oct 2024



nsmt

AMICI TRUST

encore:ll

Ellette's
MUSIC ACADEMY

AGES 5-15

OCTOBER

holiday programmes

Disney MOANA
MUSICAL THEATRE (6-13)

Sing, Act and Dance to key songs and scenes from the Moana Movie. Perform for friends and family.

SONGWRITING & MAKE A MUSIC VIDEO (8-15)
Write, record and release a song/music video.

JOIN A BAND (8-15)
Workshop covers, write originals and learn key skills on how to play your instrument in a group.

LITTLE ROCKERS (5-7YRS, 2 DAYS)
An introduction to Ukulele, Piano and Drums + performing as a band.

MUSIC MAYHEM (5-10, 2 HOURS)
Learn music and rhythm skills through Bucket drumming, World Percussion and Ukulele. 2 hours of music mayhem!

SEPT 30 - OCT 11
ALBANY AND GRAFTON CAMPUSES
ELIETTESMUSICACADEMY.COM | 09 951 4857

THE FOOTBALL GIRLS

*Caters to all abilities!
Ages 5-15yrs
7 weeks of fitness and fun*

#QUEEN OF THE TURF 2024

6th to 14th Grade
\$250 per team of 3 or add a sub and make it 4!
Limited spots available

Term 4 Mondays
4.00pm and 4.30pm starts

Register today at www.thefootballgirls.co.nz

September/October 2024

HOLIDAY PROGRAMS

Drop-Off 8:30-9:00am | Pick-Up 3-3:30pm

REMUERA	OREWA	ALBANY	WARKWORTH
Sep 30 & Oct 01 & Oct 02	Oct 01 & Oct 08	Oct 07 & 09 & 10	Oct 03

Price: \$85 per child | Spring Promo: Two for \$150!

the village square school holiday programmes

Spring school holiday programme

Spring school holiday programme

- 30 Sep - 11 Oct, 7.30am - 6pm
- Choose from on-site activities & trips every day
- On-site day: \$70 / Trips: \$89
- Balmoral, Epsom & Parnell
- + NEW Mt Roskill programme!**

Spring school holiday programme

villagesquare.org.nz/school-holidays

HOLIDAY PROGRAMMES

at Auckland Netball

■ MULTIACTIVITY ■ NETBALL SKILLS ■ COMBINATION

Looking to keep the kids entertained during the October school holidays? Choose from our fun and active holiday programmes with options to suit your needs and the interests of your child.

Week One - Commences Monday 30 September
Week Two - Commences Monday 7 October

Programmes will be running at both our venues:
Auckland Netball Centre, St Johns (OSCAR Accredited)
& Windmill Park, Mount Eden.

To book or for more information please contact:
Caitlin Smardon, Development Programme Officer
T 09 280 4129 or M 021 577 105
E development@aucklandnetball.co.nz
www.aucklandnetball.co.nz

Auckland Council
The Auckland Council of Auckland Region

AUCKLAND NETBALL

bricks 4 kidz

LEGO® STEAM Holiday Programme

30 Sep ~ 11 OCT

**HOLIDAY
PROGRAMME**



7 Harrison Rd, Ellerslie/ Mt Wellington



197 Riddell Rd, Glendowie



www.bricks4kidz.co.nz/auckland-central-east/holiday-programme/
manager.ellerslie@bricks4kidz.nz | 021 2274257

*offers may differ by locations. Conditions apply.

SCRATCHPAD
TECHNOLOGY LEARNING CENTRES



Scan QR Code

Make the most of your holidays with a fun-filled learning experience!

30th September - 11th October

BOOK NOW

- » Develop Games with Roblox
- » Learn to Code in Python
- » Let us Code
- » Let's Learn Makey Makey
- » Minecraft - Develop your own Mods
- » Code that Robot using Edison
- » Minecraft Modding Junior
- » Learn to code using Scratch
- » Introduction to Developing Websites
- » Code that Robot using Mbot
- » Let us Learn 3D Printing
- » Introduction to Graphic Design
- » Develop Games with Gamedot
- » Code that robot using Magibot
- » Creating videos using AI



(09)815 0825



www.scratchpad.co.nz



info.botany@scratchpad.co.nz

It is Bizzy Bodz's intention to provide a professional service, which will give your child a safe, secure environment and an enjoyable quality care experience.



Our Bizzy Bodz School Holiday Programme aims to provide a fun, organised, safe and above all quality holiday care for children 5-13 years of age. Our Holiday Programme operates between the hours of 7.30am - 6.00pm, Monday to Friday.

Providing fun,
organised, quality
Out of School Care
in a safe, child-
focused
environment

Welcome to Bizzy Bodz!



Holiday Programme

St Heliers

Monday 30th September - Friday 11th October
7.30am - 6.00pm

Enquiries

09 530 9020

admin@bizzybodz.co.nz

021 837 031

(Programme direct dial)

bizzybodz.co.nz

WINZ | MSD Accredited

SCHOOL HOLIDAY TENNIS CLINIC

AT PARNELL TENNIS CLUB

COACH: GORAN MARSIC

**NZPTCA (LEVEL 2), TCNZ (COMPETITION COACH),
31 YEARS COACHING EXPERIENCE.**

PHONE: (021)167-7460

E-MAIL: gmarsic@gmail.com

WEBSITE:

WWW.PARNELLTENNISCLUB.CO.NZ



**REGULAR COACHING DURING TERM TIME IS ALSO
AVAILABLE FOR CHILDREN AND ADULTS**

Whiria te Tāngata

Weave the people together

From 16th to 20th September
Michael Park School weaves together
its community in a combined
celebration of te Reo Māori language,
the Visual Arts, Crafts and Culture.



14th — 21st Hepetema

Te Wiki o te Reo Māori
Celebrating Māori
Language Week

18th — 20th September

**Whole School Art
& Craft Exhibition**
All day in the Eurythmy
room & Auditorium

20th September 1:10pm

Culture Festival Concert
Auditorium
Students in national dress
Cultural food lunch bar