



COMING EVENTS

[Click here to view the full calendar online](#)

Sunday 8 September	Ellerslie Fairy Festival
Tuesday 10 September	Raising Resilient Kids workshop
Weds 11 September	Open Day
Friday 13 September	Class 5 Lunch Bar
Thursday 12 September	Class 6 Parent Meeting 7pm
Saturday 14 September	E-waste drop off day
Saturday 14 September	Garden working bee
14-21 September	Te Wiki o te Reo Māori
Tuesday 17 September	Class 11 Parent Meeting 6.30
Tuesday 17 September	Class 12 Parent Meeting 6.30
18-21 September	Whole School Arts & Crafts Exhibition

E kara Kīngi Tūheitia Potatau Te
Wherowhero te Tuawhitu ka rongo i a
mātou kei te aituatanga ki a koe.
Haere haere haere koe ki te okioki koe ki te
kainga tūturu o te tāngata.
Haere ki te tua o te arai takoto, takoto, takoto.
Aroha koutou ki te hanga pouri mo tēnei wā.
Auē te aroha, auē te mamae.
He tangi mōteatea ka rērere atu
Paimarire



Tēnā koutou whānau,

Firstly, we acknowledge the passing of King Tuheitia Potatau Te Wherowhero te Tuawhitu. He built on the legacy of his tupuna before him to provide pathways of unity and solace for all New Zealanders. While we share the grief of his passing this week, we look forward to the future in realising his wish for te kotahitanga.

Another reminder whānau of the special parent presentation fundraiser on Tuesday night brought to you by our Parent Action Group. Adrienne Wood from the Gordon Neufeld Institute will be presenting a parenting talk about resilience in kids.

Follow this link to find out more and purchase a ticket for you and a friend: <https://www.eventfinda.co.nz/2024/raising->

[resilient-kids/auckland/ellerslie](#)

Other events that are happening next week - Tuesday period 5 & 6 after lunch, there is a special music performance from the Little Yarra Rudolf Steiner School, from Melbourne in the auditorium. During the morning, they will be workshopping with some of our students beforehand who will also take part in the performance; whānau are more than welcome to attend and watch the performance. On Wednesday, we have our final open day for the year. Please spread the word to families who might be interested to drop in next week to learn more about our points of difference. Next Saturday, 14 September at 3pm, Florian Osswald will be giving a presentation in our auditorium about the significance of Steiner Education in an AI world. Florian is an experienced Steiner practitioner from Basal, Switzerland and is visiting New Zealand, working with Titirangi Rudolf Steiner school. I have attended a number of his presentations over the years, and I can personally endorse his talks. Further information can be found in this flyer.

And finally, if you are attending the fairy festival in Ellerslie on Sunday, be sure to keep an eye out for our school stall and say Hi to our Parent Action Group running the stand supporting our kura.

Have a wonderful weekend whānau.

Naku noa,
Desmond Pemerika
Tumuaki

OPEN DAY
11 SEPT

**Discover
the difference**

Ages 3-18 years

 **MICHAEL PARK**
A RUDOLF STEINER SCHOOL

michaelpark.school.nz

FAIR 2024



- Pre loved clothing bin is now out in front of auditorium. Please make sure clothing is washed before placing in the clothing bin.
- If you or someone you know may be able to contribute item/s for our raffles this year please contact me.
- Hay bales – if you know of anyone who could help us out with hay bales please contact me.

All queries to Erin Wilson fairadmin@michaelpark.school.nz

 **MICHAEL PARK**
A RUDOLF STEINER SCHOOL
School Fundraiser

 heart
sync

Raising Resilient Kids

Tuesday 10 September, 7-8.30pm

A presentation by Adrienne Wood

When raising kids should we aim to toughen them up or soften them up?
What truly builds resilience in a child?

Using insight from the Neufeld Institute, Adrienne will talk about the vital ingredients needed to ensure optimal functioning in kids that allows them to bounce back from emotional challenges and adversity.

Adrienne will cover:

- the roots of resilience • the importance of play • keeping the lead • keeping the heart soft
- the vital importance of connection

Tuesday 10 September, 7-8.30pm

Michael Park School auditorium, 55 Amy Street, Ellerslie | \$20* per person

Tickets available www.eventfinda.co.nz/2024/raising-resilient-kids/auckland/ellerslie

*Plus \$2.75 Eventfinda fees



 **MICHAEL PARK**
A RUDOLF STEINER SCHOOL michaelpark.school.nz

 heart
sync heartsync.co.nz

Adrienne is a presenter, educator and parent consultant and a Faculty member with the Neufeld Institute. Adrienne is a former high school teacher and lecturer in human development and mother of two. She is also Team Leader of Neufeld Aotearoa and the Neufeld Institute Regional Director.

PAT HANLY AWARDS EVENING AT TOI O TAMAKI

On Friday 30th August, Lily Dickinson and Leon Kment were acknowledged for the artwork they submitted for the Pat Hanly Awards 2024 at the Auckland Art Gallery Toi o Tamaki. They were two of 22 young artists selected to share their stories through creativity. Once again congratulations to you both.

Their work is on exhibition until 13th October.



OUR SCHOOL GARDENS

Organised by the Parent Action Group

If you would like to lend a hand, please join us with your gardening gloves every 2nd Saturday of the month to make our school's vegie gardens look great!

Saturday 14th of September

(weather permitting)

10am-12pm

Drop in any time!

For more questions txt

Nina on 021 208 6206



MPS SPRING FESTIVAL

Join us for a vibrant celebration of the season as we welcome Spring together!

MPS will come alive with joyful songs, engaging games, and a delightful picnic.

This community event is a wonderful opportunity to foster a sense of belonging and celebrate the joy of the change of seasons.

Pack a picnic and join us on Thursday, 26th September at 12.20 pm.

Hypoallergenic face painting is available.
Please advise your child as to what you want for them and this activity.

Whiria te Tāngata

Weave the people together

From 16th to 20th September
Michael Park School weaves together
its community in a combined
celebration of te Reo Māori language,
the Visual Arts, Crafts and Culture.



Michael Park School
Relate Create Inspire

14th — 21st Hēpetema

Te Wiki o te Reo Māori
Celebrating Māori
Language Week

18th — 20th September

Whole School Art
& Craft Exhibition
All day in the Eurythmy
room & Auditorium

20th September 1:30pm

Culture Festival Concert
Auditorium
Students in national dress
Cultural food lunch bar

MPS Students Present:

MUSIC & DANCE CONCERT

FRIDAY
13th September

Venue: MPS Auditorium
Time: 7pm

Entry Fee:
Adult \$10 Child \$5
Family 4+ \$25

COME AND ENJOY!

CALLING ALL PERFORMERS!

To sign up for the concert on 13th September, click the link below to download the form, and return it to Amanda Lawrence or Mary Chun by Wednesday, 11th September.

<https://michaelpark.school.nz/wp-content/uploads/2024/08/Concert-Sign-Up-Sheet-13-Sept-2024.pdf>

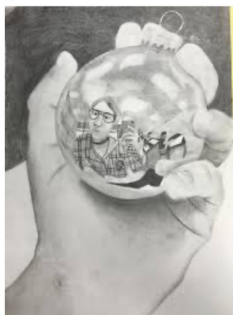
seeking
submissions

Calling all student and teacher artwork submissions for our Whole School Art Exhibition

LET'S CELEBRATE OUR CREATIVITY TOGETHER

We would love to have artwork from you before or by Friday 13th September.

*Finished drawings, paintings, collages, mixed media, designs, sculptures and 3D pieces, photographs, prints and craftwork are all welcome.
All shapes and sizes welcome within reason.*



TE AO MĀORI

A space dedicated to promoting
te reo me ōna tikanga Māori

Did you know that Steiner schools across Aotearoa have a special curriculum document, He Reo Puāwai, that supports Steiner school teachers to localise their curriculum and integrate te reo and te ao Māori into their teaching? This was created collaboratively a number of years ago by a group of four kaiako including Jade Flavell, who was then teaching at Michael Park School.

Currently, representatives from the nationwide collective of Steiner school kaiako Māori, Te Kāhui Whetū, are undertaking work to connect this document more comprehensively with the New Zealand Steiner curriculum. Alongside this, there is a working group involved in creating a resource list to support teachers when implementing He Reo Puāwai. At Michael Park School, as in other Steiner schools around the country, a vital part of librarian work is to provide and promote resources for our staff to support their research and planning in localising their curriculum.

This week's staff challenge is to find something new from He Reo Puāwai to add to their planning.

Nau mai haere mai e te whānau

Come and join our Te Reo Club for a shared kai to celebrate Te Wiki o te Reo Māori.

Wenerei 18 Hepetema, 12.30pm.

At the whare pukapuka (library)

(Please sign in and out at the office.)



Support our school at the Ellerslie Fairy Festival and Pirate Party!

We will have a school fundraising
stall selling hand made crafts
and other Snapdragon items

Located beside Ellerslie Barfoot &
Thompson

Sunday 8th September 9.30am -
12.30pm

ELLERSLIE Fairy Festival & Pirate Party

SUNDAY 8TH SEPTEMBER, FROM 9.30AM



Join the fun!

9.30AM - 1.00PM

- Facepainting
- Bouncy Castles
- Amusement Rides
- General Collective Kids Market

10.30AM - 12.30PM

- Main Entertainment:
Fairies, Pirates, Superheroes
& Princesses

 **Ellerslie
Village**

*Ellerslie shops
& cafes
open as usual*

www.ellersliefairfestival.co.nz

 Ellerslie Fairy Festival and Pirate Party

 ellersliefairfestival

OUR FESTIVAL PARTNERS:



Discover
the difference

OPEN DAY
11 SEPT

michaelpark.school.nz



MICHAEL PARK
A RUDOLF STEINER SCHOOL

Our Results for the NIWA Auckland Science and Technology Fair 2024

Congratulations to our young scientists and engineers for putting so much work into some great projects over the course of the whole year. Many thanks to the teachers, parents, and mentors for their motivation and help along the way. Very impressive results from such a small school!

Finalists from our school earned an entry into the NIWA Auckland City Science and Technology Fair. This year over 203 entries from 21 schools submitted projects in categories of technology, research, food science, earth, space, biology, behaviour, chemistry and physics.



Category Winners and Special Prizes:

- **Jett McColl**, Fight the Mites, 1st in Living World, Special Prize
- **Isaac Smith**, Monotis Identification, 1st in Planet Earth, Special Prize
- **Aurielle Stuart and Frances Pharazyn**, Breath Battle, 2nd in Living World, Special Prize
- **Bianca Park**, String Theory, 2nd in Physical World, Special Prize
- **Klara Dempsey and Zoe Gadd**, Battle of the Breads, Food Science, Highly Commended, Special Prize
- **Ruby Berghan**, Hooked on a Feeling, Physical World, Highly Commended, Special Prize

Highly Commended:

- **Arabella Clark and Enya Keerthisooriya**, Fudging Up Chewy Brownies, Food Science
- **Jonathan Reichert and Benito Maher-Hampson**, Does Time Fly? Human Science
- **Evie Arasaratnam and Coco Huggins**, Fun in the Sun, Material World
- **Coco Davies**, Making a Splash, Physics
- **Xixi Wang**, Wood You Believe It? Physics



Other Finalists: The following students will proudly be representing Michael Park School in the Auckland competition

- **Callum Silcock**, Usain Volt, Physics
- **Ollie McLeod and Felix Beckman**, Heartbeats and Harmonies, Human Science
- **Katja Skulic**, Sleep Rhythm and What Affects It, Human Science
- **Zac Groom and Emma Fellner**, Sonic Deconstruction, Human Science



RSST PRESENTS...

PARENT EDUCATION PROGRAMME

Bringing together whānau & community to experience Steiner Education.

HANDWORK with Michelle Mullany

SATURDAY, 7th SEPTEMBER 2024

WORKSHOP ONE: An introduction to wet felting and needle felting. Please bring a towel.
9.00 - 12.30

WORKSHOP TWO: Crochet for beginners and those who want to extend what they learned in the previous workshop. Please bring a #4 crochet hook.
1.00 - 4.30

Venue: Handwork Room, Michael Park School

Cost: \$30.00 per workshop

RSVP: To register for this parent workshop, please email Michelle:

michellem@michaelpark.school.nz

Places still available for all workshops tomorrow!

If you are still thinking about coming, just turn up!

RSST PRESENTS...

PARENT EDUCATION PROGRAMME

Bringing together whānau & community to experience Steiner Education.

DOLL MAKING with Nina Hamill

Held over 4 sessions, running from 9am-1pm

PLEASE NOTE THE NEW START DATE:

Saturday, 7th September 2024 in the Staff Room

Saturday, 14th September 2024 in the Handwork Room

Saturday, 21st September 2024 in the Handwork Room

Saturday, 28th September 2024 in the Handwork Room

WHAT TO BRING: Everything is provided, but any sewing kit you have, good material, scissors, needles and pins are useful.

Venue: Handwork Room / Staff Room, Michael Park School

Cost: \$155.00 per person for the 4-week course

RSVP: To register for our parent workshops, please email Dana in the school office:

danam@michaelpark.school.nz



Scratching the Surface of CSI

Universal messages and crazy stories from the front-line of Crime Scene Investigation

(minimum age requirement of 16 years, due to content)

CRIME SCENE - DO NOT CROSS CRIME SCENE - DO NOT CROSS

Ruben Miller
Forensic Scientist

Wednesday 18th September 7pm
Michael Park School Auditorium, 55 Amy Street, Ellerslie, Auckland

\$10 per person
purchase on-line www.iticket.co.nz *service fees apply
or door sales

A fundraiser for MPS Class 11

ITICKET



Class Five Sock Fundraiser

NZ Merino socks, tights and other apparel for babies, kids and grownups.

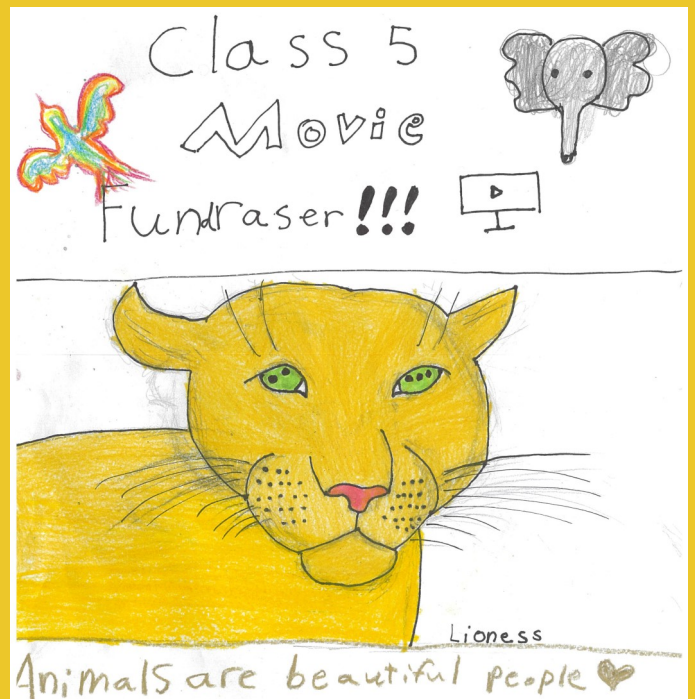
Please order online at:

www.cosytoes.co.nz

before 8th September.

Be sure to write
'Michael Park School'
in the message box at
checkout.

20% of your purchase
spend will be donated
to Class Five.



Movie - **Animals Are Beautiful People**

22nd September, 1pm, MPS Auditorium

Tickets cost \$8/person.

Kinga Csizmadia 03 0156 0860541 00 Reference - your name

We will have snacks and drinks for cash sale.

Suitable for younger siblings Prize for best costume

kinga0112@gmail.com if you have questions.

ELECTRONIC WASTE DROP OFF DAY



14th September 2024
SATURDAY 9AM - 3PM

Michael Park School
55 Amy Street, Ellerslie

Drop off your unwanted electronic products &
unwanted tech at this drive-thru event!
Staff will unload everything for your convenience.

IMPORTANT: Dropping off e-waste is allowed only on the event day. you
cannot drop off e-waste prior to, or after, the event day at this site.

We are proud to be accepting
donations for Variety - The
Children's Charity.



FREE OF CHARGE FOR DISPOSAL:

Computer & Laptops, Tablets & Small Devices, Mobile Phones, Wiring &
Cabling, Power boards & Multiplugs, Servers & Switches, Routers &
Modems, HDDS & USB Drives, UPS Batteries, Lead Acid & Car Batteries.

CHARGED ITEMS:

(Please check our website for more information)

\$1-2 each Fluorescent Compact Light Bulbs and Tube Bulbs
\$3 each Toner Cartridges, Keyboards, IP & Landline Phones
\$5 each Small Home Appliances e.g. Microwaves, Vacuums, Kettles
AV Equipment & Stereos, Digital Cameras, Oil Heaters
\$5.00 kg Household Batteries, Mixed Batteries, Lithium Batteries
\$10.00 each Small Inkjet & Laser Printers, Scanners & Fax Machines
\$20.00 each LCD & Plasma TVs, Ovens, Washing Machine & Dryers,
Dishwashers and Large Whiteware
\$30.00 each Medium Photocopiers & Printers
\$40.00 each CRT TVs & CRT Monitors, Fridges & Freezers, Heatpumps
\$60.00 each Large Photocopiers

Please note the charges above are for sharing the recycling costs.
Eftpos and cash accepted on-site.

ITEMS NOT ACCEPTED:

CDs & DVDs, Floppy Discs, LED & Household Lightbulbs, LPG Gas Bottles, Other
hazardous waste e.g. paint, garden waste or general chemicals, furniture e.g. TV
cabinets, medical devices or glass.

VISIT OUR WEBSITE TO LEARN MORE!

www.echotech.co.nz

0800 EWASTE

You can book an e-waste disposal pick-up at a
time that is convenient to you. Help us keep New
Zealand clean!



Michael Park School
55 Amy Street, Ellerslie

- Coordinator x 1 (James)
- Staff x 3
- Truck Driver x 1
- Echo Truck x 1
- Echo Van & Trailer
- E-waste Bins
- Metal Bin
- Sandwich Sign x 3
- Teardrop Flag x 2
- Road Cones x 20
- First Aid Kit x 1

Shaping Life Together

WALDORF EDUCATION
TODAY

Join a talk with international speaker **Florian Osswald**

The Significance of Steiner/Waldorf Education in an AI World

**SATURDAY 14TH SEPT 2024
3PM - 4PM**



Hosted by
Rudolf Steiner House

Michael Park School
55 Amy Street, Ellerslie, Auckland
Suggested Donation: \$10-20
Adults only

Followed by refreshments

FOR MORE INFO:
michellem@michaelpark.school.nz
hello@diannabrinsden.co.nz

Artificial Intelligence (AI) is rapidly transforming our world, presenting both opportunities and challenges. It is essential to approach AI with conscious awareness to create a future where AI serves humanity, enriching our lives while preserving the essence of what makes us truly human. Steiner/Waldorf education stands out as a beacon of creativity, critical thinking, and human connection. Our unique approach nurtures children's imagination, cultural competency, and original thinking, preparing them to thrive in an AI world.

ABOUT

Florian Osswald will be visiting Aotearoa New Zealand as an educational consultant working with Titirangi Rudolf Steiner School. Born in Basel, Switzerland, He worked as a curative teacher in the Camphill movement and then spent 24 years teaching mathematics and physics at the Rudolf Steiner School in Bern. From 2011-2021 he co-led the Pedagogical Section at the Goetheanum, contributing significantly to the development of Waldorf education worldwide.

Shaping Life Together

INSPIRING PEOPLE
TODAY

Join us for a talk with **Sam Gibson** author and wildlife enthusiast on his recent book:

Sam the Trap Man: Cracking yarns and tall tales from the bush

**18TH SEPT 2024
4PM**



Rudolf Steiner House

104 Michaels Avenue, Ellerslie,
Auckland
Suggested donation: \$10-20

Followed by shared kai in the spirit of Kotahitanga

FOR MORE INFO:
samthetrapman@gmail.com
hello@diannabrinsden.co.nz

Sam Gibson, better known as 'Sam the Trap Man', is a Tairāwhiti-based trapper, conservation worker, and bushman. His life has been deeply intertwined with the wilderness, where he hunts, traps, and fishes. With followers across various social media platforms, Sam educates people about the importance of trapping pests and predators to safeguard native wildlife. His adventures take him into the heart of Aotearoa New Zealand's bush, where he gets up close and personal with ecosystems. In 2019, he established the Eastern Whio Link to protect the threatened native blue duck, the Whio. His book delves into his experiences, from working for the Department of Conservation in Te Urewera and Fiordland to his return home to Tairāwhiti. The book not only shares humorous stories but also emphasises the cultural and ecological significance of the bush. Sam's life story exemplifies resilience, passion, and a profound connection to the natural world. Protecting these ecosystems is his life's calling, and he lives by the motto that when the bush thrives, people thrive.

Shaping Life Together

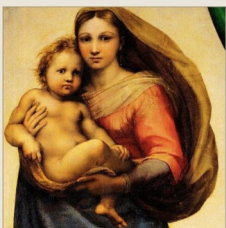
MOTHERING TODAY

Join the Steiner monthly mothers gathering!

He taonga te mokopuna, kia whāngaia, kia tipu, kia rea

A child is a treasure, to be nurtured, to grow, to flourish

**SUNDAY 22ND SEPT 2024
9:30AM - 12PM**

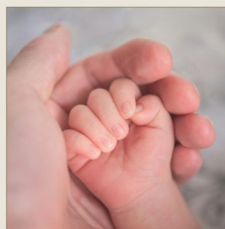


Rudolf Steiner House

104 Michaels Avenue,
Ellerslie, Auckland

Donation \$10-20

FOR MORE INFO:
hello@diannabrinsden.co.nz
michellem@michaelpark.school.nz



Healing Stories & Craft

A time for mothers to share experiences, and explore the special task of the mother.

With Waldorf inspired knowledge and skills to provide a safe and nurturing environment.

We will explore the healing powers of therapeutic stories and how they can support children in addressing emotional and behavioural challenges through imaginative and relatable narratives. With guest speaker Sally Russell

Hosted by early childhood educators.

**STACEY MCMANUS
& MICHELLE MULLANY**

THE CHRISTIAN COMMUNITY INTERNATIONAL YOUTH INITIATIVE

**INFORMATION EVENING
FOR PARENTS & YOUTH***

**7pm FRIDAY, SEPT 6th
AT 375 HUIA ROAD, TITIRANGI**

We are seeking volunteers (ages 13-20) to become part of the team to prepare and fundraise for the International Youth Camp in the Philippines in January 2026.

The 2 week camp will be on an island in the mountains, working together to build with natural materials the beginning of a Steiner school.

**Bring an interested friend!*

**Contact Hartmut Borries
hartmutborries@gmail.com
021 259 8555**



Tilly Chops Her Mop For Bowel Cancer

Hi Everyone,

I just wanted to say a huge thank you to everyone who has donated to my page or supported my family and I through this, as I am excited to say I have reached \$8000!! Thank you so, so much for making this possible, and I'm sure it's going to make such a difference to bowel cancer patients!

-Tilly

October Craft Holiday Program

with Michelle Mullany

Wednesday 2nd, Thursday 3rd October
Wednesday 9th, Thursday 10th October

9am-3pm

MPS Kitchen

Class 1-5 Tamariki (Ages 6-11)

Crafts galore and cooking/baking!

\$80 for 1x day
\$75 per day for 2, 3 or 4 days

Limited spaces available.
Book now to secure your space.

michellemullany@gmail.com
022 127 6551

BARFOOT & THOMPSON
SEASON OF

ROALD DAHL'S

Matilda

THE MUSICAL

BOOK DENNIS KELLY MUSIC & LYRICS TIM MINCHIN

BRUCE MASON CENTRE
25 September - 13 October 2024

BOOK NOW! [ticketmaster.co.nz](https://www.ticketmaster.co.nz)

ON SALE NOW!

Featuring our very own
KAHANU
from Class 7 at MPS

I'M PLAYING

TOMMY

BRUCE MASON CENTRE,
TAKAPUNA, AUCKLAND
25 Sept - 13 Oct 2024

nsmt AWACI TRUST encore:ll

HOUSE FOR SALE

CV\$1,600,000

40A BALLARAT STREET, ELLERSLIE

PROPERTY FEATURES:

- 5 Bedroom
- 2 Bathroom
- inc separate 1 bed unit (rental income \$375/w)
- 140m2
- 10 minutes from MPS

ABOUT:

10 minutes walk to Michael Park School. Family home, 4 bedrooms, 1 office, large open plan living area with outdoor entertaining area. Separate 1 bed unit currently rented for \$375/w. Established fruit trees, lawn, spa pool, large garden shed, workshop, 2 off street parks. Auction 25th September

Trademe listing #4896817758

Wendy Sadd (021) 607366

Raising Resilient Kids

Tuesday 10 September, 7-8.30pm

A presentation by Adrienne Wood

**When raising kids should we aim to toughen them up or soften them up?
What truly builds resilience in a child?**

Using insight from the Neufeld Institute, Adrienne will talk about the vital ingredients needed to ensure optimal functioning in kids that allows them to bounce back from emotional challenges and adversity.

Adrienne will cover:

- the roots of resilience • the importance of play • keeping the lead • keeping the heart soft
- the vital importance of connection

Tuesday 10 September, 7-8.30pm

Michael Park School auditorium, 55 Amy Street, Ellerslie | \$20* per person

Tickets available www.eventfinda.co.nz/2024/raising-resilient-kids/auckland/ellerslie

*Plus \$2.75 Eventfinda fees



Whiria te Tāngata

Weave the people together

From 16th to 20th September
Michael Park School weaves together
its community in a combined
celebration of te Reo Māori language,
the Visual Arts, Crafts and Culture.



Michael Park School
Relate Create Inspire

14th — 21st Hepetema

Te Wiki o te Reo Māori
Celebrating Māori
Language Week

18th — 20th September

**Whole School Art
& Craft Exhibition**
All day in the Eurythmy
room & Auditorium

20th September 1:30pm

Culture Festival Concert
Auditorium
Students in national dress
Cultural food lunch bar