



COMING EVENTS

[Click here to view the full calendar online](#)

Tuesday 1 August	RSST AGM 6pm
Tuesday 1 August	Class 6 Parent Meeting
Wednesday 2 August	Open Day
Saturday 5 August	Parent Handwork workshops
17-18 August	MPS Craft Display
Friday 18 August	Pyjama Day

Tēnā koutou whānau,

Here we are, completing week 2 of term 3. It is amazing that we are now halfway through the school year.



This week we were fortunate to hold a community parent workshop: 'Navigating Anxiety - help children to manage stressful times'. Many parents and staff attended the workshop and the feedback has been overwhelmingly positive, with attendees learning purposeful tools they were able to take away from the presentation. A big thank you to the keynote speaker Dr Mary Miller for organising the evening, and to all who attended the event.

Next week we have our fourth open day on Wednesday. Please encourage whānau and friends who have expressed an interest in the school to attend one of the two sessions that we will be holding during the day. Please direct them to our website to find out more about the open day and our school.

Have a wonderful weekend. Our Warriors have a bye this weekend.

GO THE FOOTBALL FERNs!

GO THE ALL BLACKS!

GO THE SILVER FERNs!

Heoi anō tāku mō nāianeī,

Desmond Pemerika
Tumuaki | Principal

2024 TERM DATES

*Any changes will be published in the Friday Flyer.
[Click here to view the full calendar online](#)*

TERM 1

Tuesday, 30 January - Friday, 12 April
Auckland Anniversary Day - Monday, 29 January
Teacher Only Day - Monday, 5 February
Waitangi Day - Tuesday, 6 February
Good Friday - Friday, 29 March
Easter Monday - Monday, 1 April
Easter Tuesday - Tuesday, 2 April

TERM 2

Monday, 29 April - Friday, 5 July
King's Birthday - Monday, 3 June
Matariki - Friday, 28 June

**** ANZAC Day is during school holidays - Thursday 25th April ****

TERM 3

Monday, 22 July - Friday, 27 September
Teacher Only Day (Lower & High School Parent Teacher Conferences) - Tuesday, 30 July
Mid-Term Break - Friday, 23 August

TERM 4

Monday, 14 October - Tuesday, 17 December
Labour Day - Monday, 28 October
Fair - Saturday 9 November
Mid-Term Break - Friday, 15 November



Michael Park School
Relate Create Inspire

OPEN DAY
Wednesday 2 August 2023

Talk & tour 9.30am - School Classes 1-12

Talk & tour 3.30pm - Kindergarten & School Classes 1-12

- Building imaginative and resourceful problem solvers; flexible learners, equipped for life.
- A broad, well-rounded, human-centred Steiner education from Kindergarten to senior High School.
- A rich curriculum of outdoor classroom, crafts, music, environmental studies and drama combined with traditional and academic subjects.
- High rates of course endorsement for NCEA and a pass rate well ahead of the national average for New Zealand secondary schools.
- As an area school we are not zoned. Students can commence Steiner Education at any stage of their schooling.

Enrolling now

For further information, or to enquire about an expression of interest pack
visit our website or contact our enrolments officer on 579 3083.

55 Amy Street, Ellerslie

www.michaelpark.school.nz

CLASS 6 DOLL & ANIMAL MAKING

I love the way that fantasy, desires and culture can be expressed and met in the handwork curriculum .

Michelle Mullany
Handwork teacher



#SheBelongs

Over the holidays, Sienna, Layla (class 11), Rosa (class 12) and I had the opportunity to join a very special soccer team. This soccer team was organized by Umma Trust, a charitable trust based in Mt Albert, with the initiative to 'support one, empower many' by providing social and community services for refugee and migrant communities. The team was inspired as a result of the #SheBelongs team, from America, reaching out to Umma Trust. Our team of girls came from a mix of refugee and non-refugee backgrounds. We met up twice a week to practice football in preparation for last Wednesday's football game against the #SheBelongs football team.

The #SheBelongs team is a team that paired girls from Utah with refugees from places including Rwanda, Iraq and Afghanistan. The team was formed in



April with the goal of taking the girls to the FIFA Women's World Cup games. Adam Miles, the founder of the Utah-based organisation 'Bridges To America', formed the #SheBelongs team. They came to NZ hoping to share their message of "inclusion, belonging and hope." Adam and the team are working towards "gender equity and belonging" for women of refugee and non-refugee backgrounds.

My experience - Rosa Jonas

The opportunity to join the #SheBelongs team meant I got to know such genuine and passionate team mates from both refugee and non-refugee backgrounds. Everyone was so positive and had serious skills in playing football, we learned a lot about the sport and understanding others in such a short span of time. Our match against America gave



TE AO MĀORI

More on te huarere (the weather)

This term the Te Ao Māori section is going to focus on things to do with the weather. After last week's list of weather-related kupu, here are some phrases in te reo Māori to talk about the weather...hopefully you will have the opportunity to use "kei te paki" sometime soon!

Kei te pēhea te āhua o te rangi?

How is the weather today?

Kei te mahana - it's warm.

Kei te pupuhi te hau - it's windy
(the wind is blowing).

Kei te paki - it's fine.

Kei te ua - it's raining.



Kīwaha o te wiki

He rangi mokopuna - it's a beautiful winter's day, a day with unlimited potential.

the team a chance to operate at a professional level and everyone got on the pitch and had a good time. The initiative of the Umma Trust organization has inspired me to do service in the community and continue playing football after school.

Thank you for taking the time to read our letter, and we hope it brought your daily dose of inspiration in supporting refugee communities and projects that empower women.

Written by Sienna, Rosa, Layla and Luka.

PS. We have a really exciting interview with CNN, a USA based TV station, next Monday so please watch out for it!

MPS Crafts Exhibition

Handwork, woodwork, metalwork,
leatherwork and pottery.

8:30am to 7pm on Thursday 17th August.
8:30am to 10.30am on Friday 18th August.

Crafts from classes 1-12 on display
in the auditorium foyer.



COMMUNITY NOTICEBOARD

- **Babysitter:** Are you looking for a responsible babysitter to take care of your children? I'm Ella, I'm in class 12 and would love to look after your children and provide you with peace of mind while you away. I am available most weekday and Sunday evenings, but work 1-2 shifts a week as a waitress on changing days. My rates are negotiable but start at \$20 an hour. I am available on 02108775088 and ellag@michaelpark.school.nz for any inquiries. I look forward to meeting your family :)
- **For sale:** Private, secure family home with income potential. Boakes Rd, Mt Wellington.
www.bayleys.co.nz/listings/residential/auckland/auckland/3-boakes-road-1800866
- **For sale:** 4 bed, 3 bath house in Arthur St, near school.
www.barfoot.co.nz/property/residential/auckland-city/ellerslie/house/846973

Contact the editor, Dana Marcroft at fridayflyer@michaelpark.school.nz
Guideline 150 characters maximum please. Deadline Thursday lunchtime.

Graphic advertisements to be formatted to fit A6 portrait (¼ page).

Whole page ads are not accepted for non school-related activities. Ads may be published a maximum of twice per term, at the editor's discretion.

RSST PRESENTS...

PARENT EDUCATION PROGRAMME

A series of parent workshops to be held throughout 2023 at Michael Park School, bringing together whānau & community to experience Steiner Education.

HANDWORK with Michelle Mullany

SATURDAY, 5th AUGUST

WORKSHOP ONE: **Sewing - a beginner's course on the sewing machine, making a pin cushion and a wheat bag.**

9.00am - 12.30pm Cost: \$20.00

WORKSHOP TWO: **Spinning wool & weaving**

1.00pm - 4.30pm Cost: \$30.00

Venue: Handwork Room, Michael Park School

RSVP: To register for one or both of these parent workshops, please email Dana in the school office:

danam@michaelpark.school.nz



MEETING ANTHROPOSOPHY

First Saturday of every month.

Next session on 5 August 2023

10.30am to 11.30am at Steiner House

104 Michael's Avenue, Ellerslie

(Free, but please consider koha for Steiner House.)

Come and find a path to answer life's questions. Our aim is to build a picture in a collaborative way.

Anne Mansart will be your host.

Play Chess!



- ✓ Improve concentration and focus
- ✓ Develop problem solving skills
- ✓ Develop strategic thinking
- ✓ Improve decision making
- ✓ Develop independent thought

0800 4-CHESS

www.chesspower.co.nz

Join our Chess coaching classes here at our school!

- Learn a new skill each week
- Professional and accredited coaches
- Well structured classes
- Good mix of learning and playing
- Skill ratings and progress reporting



Visit the Parents Centre on www.chesspower.co.nz to learn more

Friday 21st July

Start date

Friday 22nd September

****No class on Fri 15 September**

End date

Library 1.25 - 2.25pm

Room

\$ 139

Term Fee

Register online today at www.chesspower.co.nz/class-registration



Anthroposophical Nursing Therapies

With Nicole King NZRN Comp ANS
Holistic Nursing Therapies

Are you or your child struggling with anxiety or overwhelm?

Is your child experiencing learning or behaviour challenges?

Are you or your child feeling tired or depleted?

I provide nurturing, warming and grounding body therapies using Weleda oils and plant-based substances.

These therapies support the Life Processes and build resilience to enable individuals to meet all types of transition and challenge.

This work is suitable for both children and adults.

To enquire further or to make a booking, please contact me on

nicoleking.anthonurse@gmail.com

or 021 184 6082



August / September
2023 Classes



2nd Aug / 6th Sep
Bracelets



9th Aug / 13th Sep
Leaf pattern Jewellery



16th Aug / 20th Sep
Gem Stone Necklace



23rd Aug / 27th Sep
Wrap a Flat Stone

Register

www.shilohcentre.org.nz

The Art Collective

Collaborating & charting the landscape of today's art scene

MICRO MACRAME JEWELLERY WITH YOKO

'OUR MICRO MACRAME WORKSHOP OFFERS AN INSPIRING WAY FOR YOU TO DISCOVER AND ENJOY YOUR OWN SPECIAL CREATIVITY. WE USE BEAUTIFUL NATURAL CRYSTALS AND GEMSTONES THAT HAVE A POWERFUL ENERGY AND MESSAGE.'



Wednesdays
August & September

10:30am - 1:30pm

We will create a different project every week

\$100.00 for all four sessions
or \$25 per session

Shiloh Creative Life Center
117 Arthur Street, Onehunga, Auckland



Auckland Council
creative
COMMUNITIES *nz*

Art Collective Project

onishifuyou@gmail.com

Yoko : 0212300325

www.shilohcentre.org.nz



2023 Art Classes



The Art Collective Project

Collaborating & charting the landscape of today's art scene

August

Tuesdays (10am-1pm)
Watercolour Art Classes
with **Linda Wills**

Wednesdays (10:30am - 1:30pm)
MicroMacrame Jewelry
with **Yoko Onishi**

Saturday Aug 5 & 19 (10am - 4pm)
Human Figure Exploration
with **Nicky Hartley**

Saturday Aug 12 & 26 (10am - 4pm)
Sewn Textile Artwork
with **Dee Petit**



Shiloh Creative Life Centre
117 Arthur Street - Onehunga, Auckland



September

Tuesdays (6pm - 9pm)
Intuitive Collage Workshops
with **Naomi Azoulay**

Wednesdays (10:30am - 1:30pm)
MicroMacrame Jewelry
with **Yoko Onishi**

Saturdays Sept 2 & 23 (10am-4pm)
Watercolour Art Classes
with **Linda Wills**

Saturday Sept 9 (10am - 4pm)
Intuitive Collage Workshops
with **Naomi Azoulay**

Saturday Sept 16 (10am - 4pm)
Human Figure Exploration
with **Nicky Hartley**

Saturday Sept 29 & Sunday 30 (10am - 4pm)
Sewn Textile Artwork
with **Dee Petit**

Register
www.shilohcentre.org.nz

[Art Collective Project](https://www.facebook.com/ArtCollectiveProject)
 022 309 2979

dee@shilohcentre.org.nz
 www.shilohcentre.org.nz

The Christian Community New Zealand
presents

FAMILY SUNDAYS IN THE CHRISTIAN COMMUNITY

10 Rawhiti Road, One Tree Hill

JOIN US ON THE FOLLOWING DATES:

August 6 / September 3 / October 1 / November 5 / December 3
2023

10:00 AM The Act of Consecration of the Human Being
11:00 AM Morning Tea
11:30 AM Family Time with singing, story and craft activity.
12:15 PM The Sunday Services for Children
12:30 PM Shared Lunch

PLEASE CALL 5252305 FOR INQUIRIES

Artwork by Raph Lazo

MASSIVE COMPANY
PRESENTS

Starring Michael Park
alumnus Cypha Clark! -Ed

BASEMENT
THEATRE

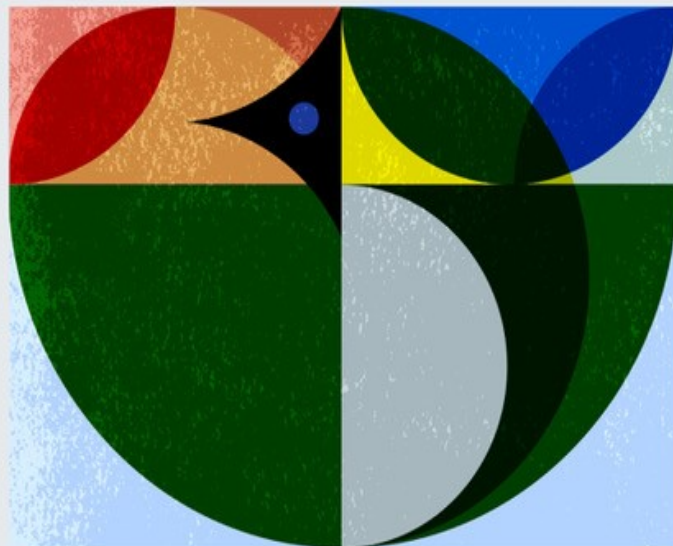
Heart go...
BOOM!

25 - 29 July 2023 | Basement Theatre
Book online at iticket.co.nz or call 09 361 1000



Sunday 30 July, 10am-3pm

Mid-winter market



Rain date - 6 August

96 Captain Springs Road,
Onehunga

AUCKLAND
STUDIO
POTTERS