


Michael Park School – How to access the edge portal

There are two ways to access the Caregivers Portal

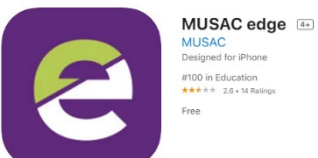
Firstly, via the mobile edge app.

Download the app for your device. It is available for both Apple and Android devices and can be downloaded from the relevant stores.

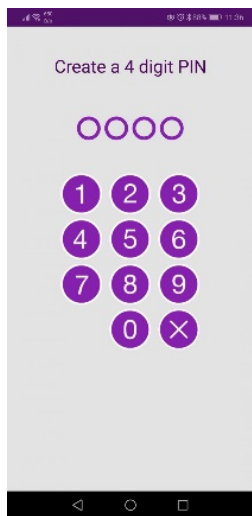
Click on the below links to go directly to the app download page.



Google Play Store
<https://play.google.com/store/apps/details?id=io.musac.edge>

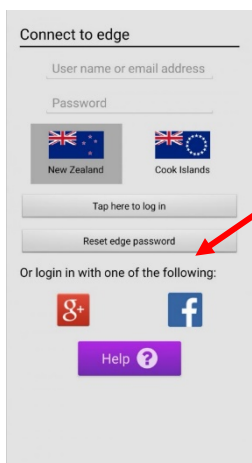


Apple Store <https://apps.apple.com/nz/app/musac-edge/id1174126289>



Once you have downloaded and installed the app the first screen you will see on the app is the following. This is where you set up your PIN. You will need enter your PIN twice to confirm it.

Once you have done so you will be presented with the login screen.

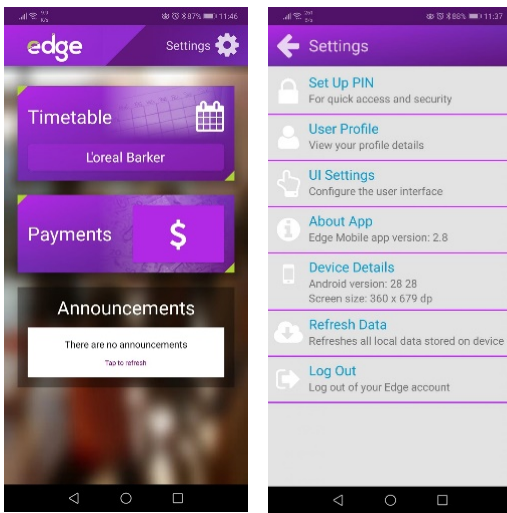


If your email address that we have on file is associated with a Google account or Facebook account you are able to click the button to the side to login.

Or you can select the 'Reset edge password'. This will email you a link to set up your password. The MUSAC email might go straight to you Junk or Spam account.

Follow those instructions to set it up, then return to the app.

These steps will only have to be done the first time you Log In. If you use the Log Out function in the app you will need to repeat the above steps.



Once you have logged in you will be presented with your Dashboard, and from here you can view your child/childrens data including (but not limited to) Attendance, Timetable and Reports.

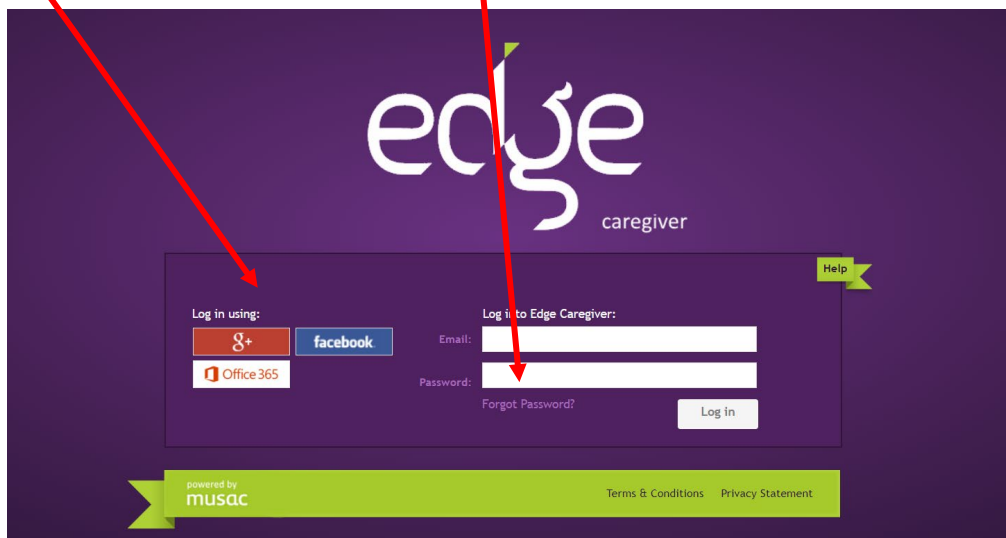
The Settings menu can be found in the top right corner. From there you can Change your PIN, View your Profile etc as well as log out of the Edge account (only necessary if you have multiple Edge accounts).

Secondly, via the following website link:

https://parent.edgelearning.co.nz/Loginpage_caregiver.aspx?returnurl=%2fcg%2fdashboard%2fmydashboard

If your email address that we have on file is associated with a Google, Facebook or Office 365 account, then you can click the buttons to the side to login.

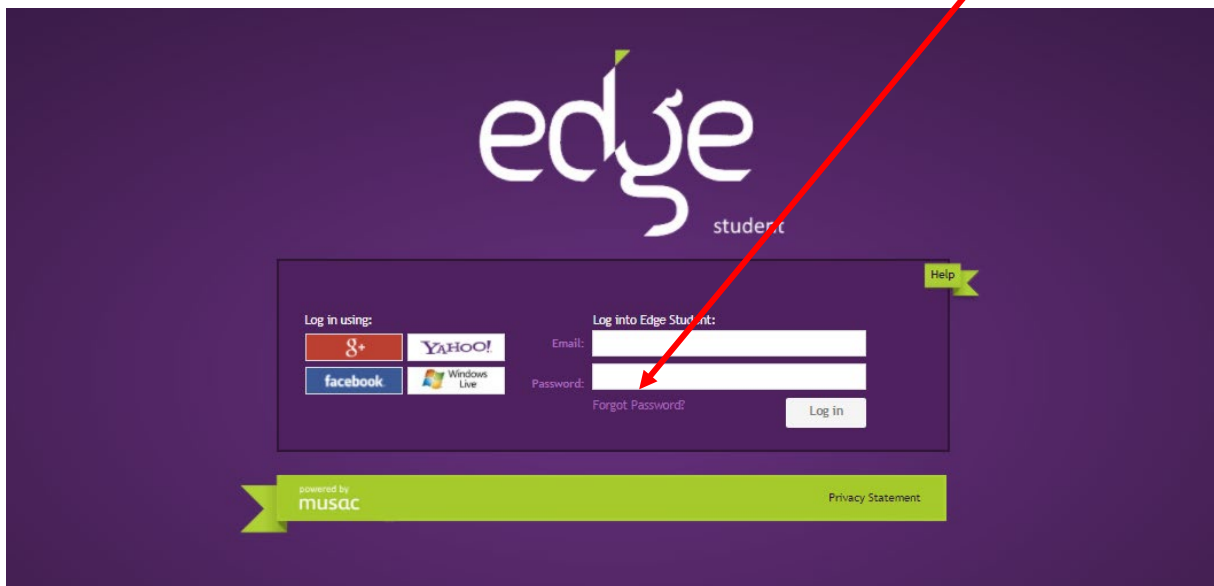
If your email address is not associated one of these accounts, then please type in your email address and select 'Forgot Password'. This will email you a link to set up your password. The MUSAC email might go straight to you Junk or Spam account. Follow those instructions to set it up, then return to the webpage.



To access the Portal for Students, please use the following link:

https://student.edgelearning.co.nz/Loginpage_student.aspx?returnurl=%2fs%2fdashboard%2fmydashboard

You are to login using your Michael Park School email address, once your email is typed in click Forgot Password. MUSAC will then send you an email to reset your password for the Portal.



To access your school email to find the new password for the Portal use the following link:

<https://www.office.com/>