



COMING EVENTS

[Click here to view the full calendar online](#)

Tuesday 21 February	Class 6,7,8,10 Parent Meetings
Wednesday 22 February	Open Day - talk and tour at 9.30am and 3.30pm
Wednesday 22 February	Kindy New Families Induction Evening, 7.30pm
Tuesday 28 February	Class 9, 11, 12 Parent Meetings

Kia ora koutou,

Our thoughts and prayers go out to whanau throughout the motu who have been affected by cyclone Gabrielle, in particular to communities in Muriwai, Northland, Hawkes Bay and Gisborne.



Both our school and kindergarten were very fortunate not to sustain any damage, yet I am mindful there were staff and whānau within our own community where this was not the case. Please know that we are here for the long haul to support you now and moving forward.

It has been comforting to see the level of community support that is rallying around those most affected, and I am aware of endeavours within our student body to raise funds in support of those who have lost so much due to the weather events, as well as raising funds to support those who were affected by the earthquake in Turkey and Syria two weeks ago.

The scope of this disaster is enormous and efforts to repair and rebuild will require the commitment and support of the whole community in Aotearoa. The best in people is often seen in these times and some of the stories coming out of this event are inspiring and heartening despite the ongoing tragedy and further reports of loss of life.

It is nice to be able to bring some positive news in the light of the past six days – our NCEA results for Level 2 and Level 3 were superb. Full details will be in the Flyer next week. Two highlights before that – Olivia McKenna attained a scholarship in Art Painting and Isla Keast attained a scholarship in Sculpture for 2022. Congratulations to Olivia and Isla for being in the top 5% of their subject.

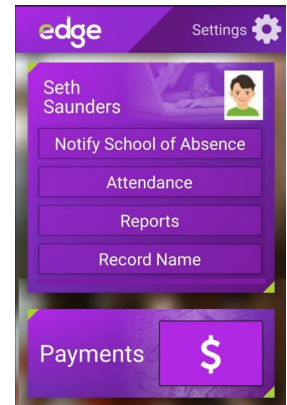
Ma te aroha me te marama,

Desmond Pemerika
Tumuaki | Principal

PARENT PORTAL AND COMMUNICATION APP TO DOWNLOAD

Our school is now set up for using 'The Edge' (Musac Edge) to communicate notifications, as well as being able to receive messages from whānau about absences or if a child is running late, or if a child has an external Doctor or Dentist appointment and will need to leave school early.

The Edge app will also enable whānau to interact with your child's schooling. You'll be able to view that they have been marked present in class, access past and present school reports, view your contact details and Michael Park School account (does not include RSST), view student timetables and view NCEA grades for Classes 11 and 12. Further capabilities may be rolled out next year.



We would like all whānau to download the **Musac Edge** app onto your phone and save the **Musac Edge** web link on your computer now that we have gone live. We will be **discontinuing SchoolLinks** for school messaging later this term, and using **The Edge** exclusively. ****The Kindergarten will continue to use SchoolLinks.**



edge
MUSAC

Google Play https://play.google.com/store/apps/details?id=io.musac.edge&hl=en_NZ&gl=US

App Store <https://apps.apple.com/nz/app/musac-edge/id1174126289>

Web Portal https://parent.edgelearning.co.nz/Loginpage_caregiver.aspx?returnurl=%2fcg%2fdashboard%2fmydashboard

As with any new project, there may be some teething issues or gremlins pop in the case of the IT. For those issues and general inquiries, please contact andrewj@michaelpark.school.nz

Andrew Johnstone
Deputy Principal

GOT YOUR HAT?

Remember, sunhats are required during terms 1 & 4 for break, lunch and outdoor lessons.



STUDENT ID PHOTOS CLASSES 7-12

ID photos for Classes 7 to 12 have been rescheduled to Wednesday 15th March, which is the same day that class photos will be taken.

HIGH SCHOOL PARENT MEETINGS

Dates have now been set for class parent meetings in the High School. If parents / caregivers would like to add something to the Class meeting agenda please feel free to contact the Kaitiaki as this would aid in a timely and organised meeting.

Class 9, 11 and 12 parent meetings that were postponed on Tuesday due to the cyclone have been rescheduled to Tuesday 28th February.

Class 12 Tuesday 28th February @ 6pm, in the Chemistry room. (Aliona and Edgar)

Class 11 Tuesday 28th February @ 6pm, in room 10 (Iva)

Class 10 Tuesday 21st February @ 6pm, in Room 11 (Mike and Alan)

Class 9 Tuesday 28th February @ 7pm, in the Art Room (Aurelia)

Class 8 Tuesday 21st February @ 6pm, in Room 9 (Ciaran and Patrice)

LEARNING FRENCH AFTER SCHOOL

Keen on learning another language? Want to know how to pronounce le Pain au Chocolat? We're organising a French Class after school on Thursday afternoons, starting this term on school grounds, at Beginner level. Shout out if you're interested, as we're just finalising participants.

Your child needs to be able to read and write proficiently (the lessons are ideally suited to Classes 4-8).

For all the details, please contact catrina.kuehler@gmail.com

A bientot!



CHAIRS FOR SALE

\$10 per chair

20+ available.

Contact

erinw@michaelpark.school.nz

Play Chess!



- ✓ Improve concentration and focus
- ✓ Develop problem solving skills
- ✓ Develop strategic thinking
- ✓ Improve decision making
- ✓ Develop independent thought

0800 4-CHESS

www.chesspower.co.nz

CHESS POWER COACHING PROGRAMME

For the last two years we have been unable to offer Chess Coaching to our students.

This year, we are hoping to re-instate the Chess Power Coaching Programme for our enthusiastic students from Class 2 to Class 7.

Each session starts with a formal lesson; all players learn a new strategy, idea or skill each week, then they put those skills into practice through activities and games. All games are monitored and supervised by the coach who provides individual feedback along the way.

Sessions will be held weekly on **Fridays from 1:20pm to 2:10pm, in the Library, from Friday, 17 February 2023.** The last session for the term will be held on 31 March 2023.

Fees will be based on the number of students attending and could be as little as \$70 for the 7 week programme.

If you would like your child to participate in the programme, please email me to register (arlenec@michaelpark.school.nz). Please note this process is different from previous years, in order to streamline the registration process and avoid disappointment. Registration and fees will be confirmed prior to commencing sessions.

We look forward to having more students join our coaching sessions.

Arlene Cairns

COMMUNITY NOTICEBOARD

- **Seeking house for rent** - New MPS family with student in Class 9, looking for somewhere to rent nearby. Ideally a two bedroom place, or small 3 bedroom, within walking distance of school. If you have, or know of anyone with, a home for rent in the vicinity please contact Jo on 021 127 0244.

Contact the editor, Dana Marcroft at fridayflyer@michaelpark.school.nz
Guideline 150 characters maximum please. Deadline Thursday lunchtime.

Graphic advertisements to be formatted to fit A6 portrait (¾ page).

Whole page ads are not accepted for non school-related activities. Ads may be published a maximum of twice per term, at the editor's discretion.

CLASS 10 PRESENTS

KING LEAR

The Class 10/ Senior Play.

It's been a turbulent few days, like the plot of Lear, we've been amidst a storm, literally. Feeling our vulnerability within the mightiness of Mother Nature and experiencing our collective humanity and compassion, the intense storms that we have just experienced as a country and community are very much what King Lear faces in our play, inwardly and outwardly. It has been a rocky week of disruption, nevertheless, next week we enter play immersion. We have been busy researching our characters' backgrounds, relearning the language of Shakespeare, making our set and designing. Next week we hit the ground running.

It's been a slurry of emotions- excitement, buzz, anticipation and a little fear. But this will be our last play as a class, so we need to savour it. Appreciate it. Enjoy it and honour it. But most importantly, be in the moment and live the experience fully. Our class is united in our desire to take on the mountain that is this play. Our play.

Patrice gave us three plays to dig into, and all had themes that resonated with the impulse of Class 10 (Balance) with smatterings of Class 12 (World Consciousness).

All were great and worthy plays, a Greek play, a Medieval mystery play and Shakespeare. We are a small class, but a core group decided that for our final play at Michael Park, we wanted to do something epic and aspirational. Patrice has made it clear to us that out of the three, this is the most challenging, but we decided to take on the great challenge that is King Lear. We know we are only 15/16-year-olds, but at the end of the day, why not?! Why not do something aspirational that will give us that euphoric feeling of accomplishment and satisfaction? In drama, over the past years, Ms. Wilson has always said to us that if we are going to create something, we might as well strive for the highest, and the class gave their all to the Class 8 Play in 2021 and went away feeling our success. So, it is exhilarating that this time our class decided for ourselves and agreed that we have nothing to lose other than

be aspirational, take on something epic and go out with a bang.

This one is for us, Whanau! But we are sure that you will get something out of it, and we would love you to be there to support us and witness our efforts. Our set is pretty cool, although not an obvious choice, nor is casting for us, but it is Epic Drama...Recommended for Class 7 and above, due to one slightly gruesome scene involving eyes!!! This is Tragedy but deals with themes very relevant for these times - man's relationship to nature and the divine, the nature of power and true leadership and man's ability to truly know himself and to see and speak the truth.

So, mark down on your calendars: Thursday, 16th and Friday, 17th March from 7 pm, in the Auditorium, to witness the fruits of our labours. Tickets go on sale on iTicket.co.nz next week.

See you at the show, it's going to be Epic!!

Patrice, Amberley, Nulara and Tilly (on behalf of the class).

CLASS 10 PRESENTS

KING LEAR

THURSDAY 16 MARCH
FRIDAY 17 MARCH
7PM

TICKETS ON ITICKET.CO.NZ
ADULT - \$18
CHILD - \$15
FAMILY (OF 4) - \$45



RECOMMEND CLASS 7 AND ABOVE

2023 TERM 1

Music Lessons

Want your child to learn piano, guitar, or violin at Michael Park School?
We have amazing music tutors who are highly trained and passionate about teaching musical instruments.

- 30 mins 1:1 Lesson (\$39)
- FREE 30 mins trial lesson in Term 1



Contact Cherry Music Studio Now
0274 236 414 (Rebekah, text preferred)
cherrymusicstudiomteden@gmail.com

www.cherrymusicstudio.com
instagram @cherrymusicstudio



ST CHADS COMMUNITY CENTRE

SPEECH & DRAMA LESSONS

WHO?

Open to students aged 5 - 18.

WHEN?

1 x 30-45 min (age dependant) lesson per week during school terms.
Lessons are held after school at St Chads Community Centre, on Wednesdays and Thursdays.

WHERE?

St Chads Community Centre,
St Johns Rd, Meadowbank

LESSONS INCLUDE...

- Public speaking skills
- Acting skills
- Positive body language
- Speech writing & delivery
- Vocal skills
- Poetry recital
- Reading aloud
- Manners & relationship skills
- Building self-esteem & confidence

We also offer professional qualifications through our association with NZ Speech Board and Trinity College of London.

For more information

www.headheldhigh.co.nz • jenni@headheldhigh.co.nz • Jenni 021 935 422

TĀMAKI MUSIC SCHOOL



2023 ENROLMENT DAY

ENROLMENT DAY IS ON:

SATURDAY FEBRUARY 11th 2023

9 AM - 11 AM

AT

TĀMAKI PRIMARY SCHOOL

(Alamein Road Panmure)

TUITION IS AVAILABLE IN THE FOLLOWING INSTRUMENTS
FOR PRIMARY AND INTERMEDIATE STUDENTS' YEARS 1-8

CLARINET

FLUTE

GUITAR

RECORDER

VIOLIN

TUITION FEES: \$10.00 (PER TERM)
INSTRUMENT HIRE: \$10.00 (PER TERM)

Enrolments will be open after this date if you are not able to attend on the day,

FOR FURTHER INFORMATION PLEASE CONTACT

EMAIL: tamaki.music.school@gmail.com

JACOB SAMSOM Co-ordinator or JULIE SAMSOM Liaison



Eliette's Music Academy

PLAYING BASED MUSIC ACADEMY

INSPIRING CONFIDENCE & CREATIVITY THROUGH MUSIC



LESSONS FOR ALL AGES

REGISTER NOW
FOR TERM 1

LEVEL 2, 181 KHYBER PASS ROAD, GRAFTON

0212296767

GRAFTON@ELIETTESMUSICACADEMY.COM

WWW.ELIETTESMUSICACADEMY.COM

CLASS 10 PRESENTS

KING LEAR

THURSDAY 16 MARCH

FRIDAY 17 MARCH

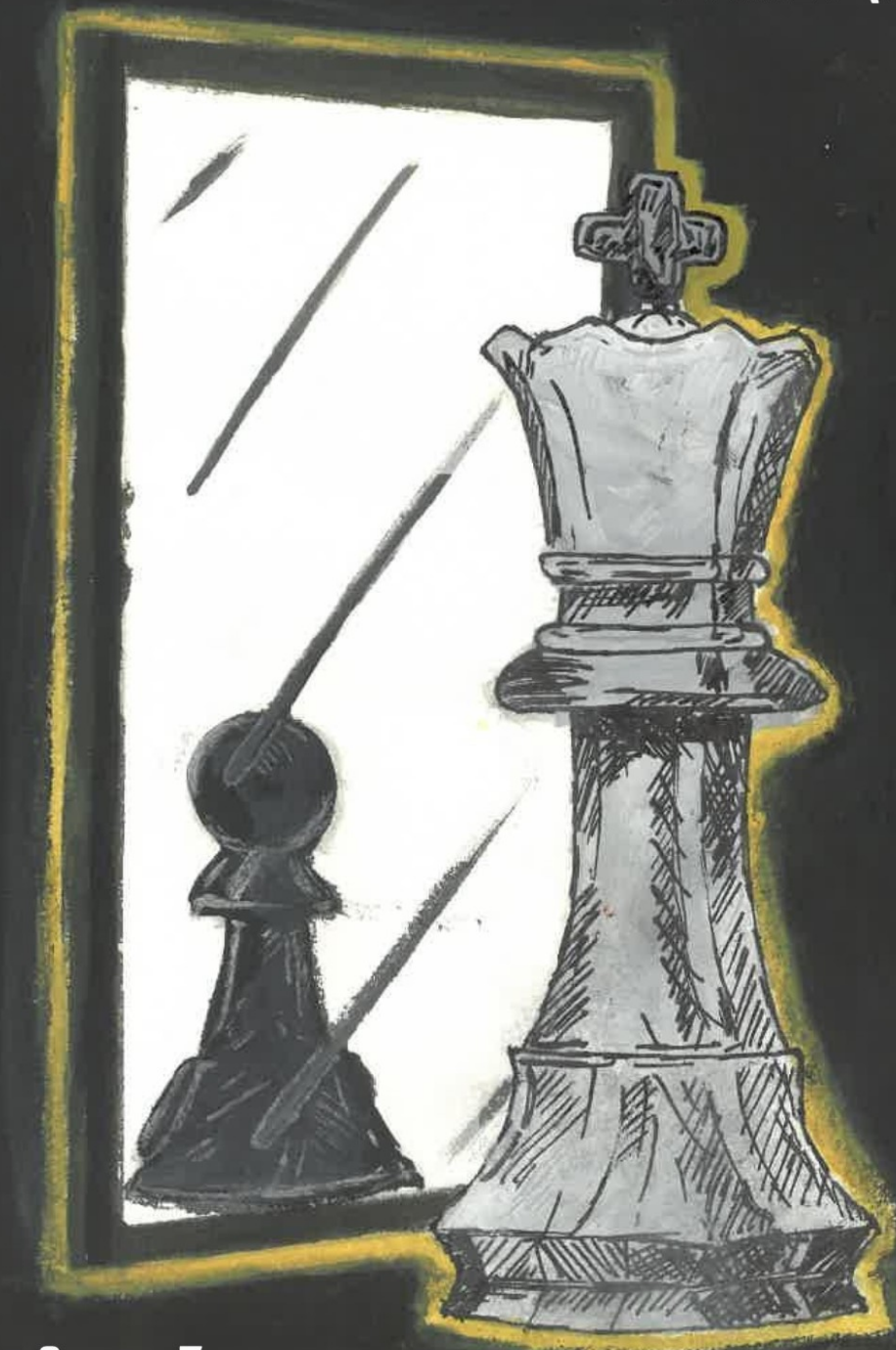
7PM

TICKETS ON iTICKET.CO.NZ

ADULT - \$18

CHILD - \$15

FAMILY (OF 4) - \$45



RECOMMEND CLASS 7 AND ABOVE